



BENCHPRESS

Benchmark Hoists

12 Months On

12 months ago on 1st September 2009 Benchmark Hoists was formed as a division of Benchmark Scaffolding!

So what have we done in that time? Not a lot some might say!!!

We have, however, been quite successful, in what can only be considered difficult market conditions. Whilst many of our competitors have a large proportion of their Hoist fleet standing we have been able to secure new business.

Much of this has been as a direct result of working with Benchmark Scaffolding offering a total package on site. We always knew that this would prove successful as our customers recognise the benefits this brings in terms of design responsibility for the whole works, improved co-ordination of the installation, leading to improved safety, a more reliable service and, ultimately, cost savings!

The majority of our projects are in London and South East, however more recently we have been able to supply a M15/32 Goods Hoist with Barnsley Branch on a project for Tolent Construction at the Majestic Hotel in Harrogate, where major refurbishment is under way following severe fire damage.

So we quickly established a Hoist business in support of Benchmark Scaffolding, and this was mainly supplying Goods Hoists and Gantry Beam Hoists on projects for:

- ★ **Erith Demolition – Mace Q1 Cafe Royal London**
- ★ **PAYE – Sir R McAlpine Q3 Regent Palace Hotel London**
- ★ **Irvine Whitlock – SLAM Hounslow Barracks**
- ★ **Multibuild – New Premier Lodge Hanger Lane**
- ★ **Bovis Lend Lease – Maritime Museum Greenwich**
- ★ **Woolf – Aberconway House, South Street, Mayfair**
- ★ **Tolent – Majestic Hotel, Harrogate**

Benchmark Hoists Continued...



Bovis Lend Lease Maritime Museum Greenwich



PAYE Q3 Regents Palace Hotel London



Irvine Whitlock - SLAM Hounslow Barracks



This was all good stuff, but we still needed to secure projects for the Hire of Passenger/Goods Hoists to demonstrate our capabilities in this market and we have now done this independent from the scaffold business!

Bovis Lend Lease – New Block L Imperial College Hospital, Hammersmith

ALIMAK 650 FC 32>39 Modular Hoist Extendable . Short cage 3 motor drive

CAGE SIZE . 3.2m X 1.5M
SWL CAPACITY . 3000KGS

CAGE SIZE . 3.9m X 1.5M
SWL CAPACITY . 2600KGS

C GATE . side loading via C gate in cage & enclosure max 2.5m wide

TRAVEL SPEED . variable 0>54mtrs/min

ISG - Queen Mary University Mile End Road, London

ALIMAK 650 23/32FC . Modular Hoist extendable . Short cage 2 motor drive

CAGE SIZE . 3.2M X 1.5M - SWL CAPACITY . 2300KGS As Photo

CAGE SIZE . 3.9M X 1.5M - SWL CAPACITY . 2000KGS Extended Version Available

TRAVEL SPEED FC variable 0>40 mtrs/min

On both these projects (above) we have supplied the new Alimak scando 650 passenger/goods hoist

- The all-new fully modular Scando 650 hoist offers improved performance, durability and lifting capacity, with lower energy consumption and reduced cost of ownership
- With either Two or Three FC frequency control motors driving the system through high efficiency gearboxes, the Scando 650 operates at speeds up to 65 m/min and provides more hoist power, while using as much as 40% less power than previous Scando models.
- Also with the Alimak ALCII Driverless Control system added

ALCII DRIVERLESS CONTROL

There are many benefits from using Driverless Hoists in terms of efficiency and cost savings. The Hoist supplier must be able to provide a safe system to include additional control measures in the absence of a full time operator, but there is still a requirement of the contractor to manage the process on site.

This is no more or less onerous than the existing requirements for Driver operated Hoists.

All Driverless Hoists should have as a minimum:

1. A safe means of emergency lowering fitted inside the Hoist cage to eliminate the need to access the cage top to release the motor brakes . this should be supplemented with centrifugal brakes to control the lowering speed.
2. Overload sensing fitted as standard with either or audible/visible warning and cut out in the event of significant overload condition.
3. 2 modes of operation controlled by a key switch . mode 1 being full driverless operation with cage & landing controls & mode 2 non-driverless with cage only control for material deliveries & also any awkward lifts.

Benchmark Hoists already meet these standards . we will provide a DVD/CD Rom training aid to be included in the site induction process . detailed signage for cage and landings and Hoists incorporating the latest ALCII automated logic control system from Alimak, which is the computerised control system.

From the outset, we wanted the backing of AlimakHek in terms of product & technical support, recognised as world leaders in construction hoists, transport platforms and mast climbing work platforms.

We have such confidence in the product we have now invested in Alimak Goods Hoists and more recently in 650 passenger/goods hoists for our current projects . we share similar goals & ambitions and believe the future can only be onwards & upwards in our partnership!

**Steve Crompton—Manager Hoist Division
London Region**

Barnsleys latest recruit MAN TGA 430



Time to Change

In October, just when you get used to it getting dark at around 5.30 ó 6.00pm, we change our clocks from following British Summer Time (BST) back to Greenwich Mean Time (GMT). The change between the two takes place at 01.00 GMT, Sunday 31st October 2010.

This means it will be dark an hour earlier, and don't we notice it! It seems as though suddenly the nights are substantially longer.

Subconsciously, many of us will feel winter has dawned. Most of us will be travelling to and from work in darkness so perhaps it's not surprising that so many people, up to one in every 20, suffer from SAD (Seasonal Affective Disorder) during the UK's long winter days. This is a specific type of depression that experts believe is related to a lack of exposure to daylight. It affects people at the same time each year ó during autumn and winter.

As the sun continues its journey south of the equator, to bring summer to the Southern Hemisphere, winter sets in the Northern Hemisphere. Here the sun, now at a lower angle in the sky, is weaker and sets earlier than during the summer. So the nights become increasingly longer and this does have an affect on the weather.

In the depths of winter the nights in the UK are anything from 15 ó 19 hours long. On clear winter nights heat escapes from the ground for longer than it does in the summer, so allowing temperatures to fall further and increasing the chance of frost. This can lead to hazardous driving conditions such as black ice on the road. Frost and ice can also form on scaffolds and scaffold materials making them potentially hazardous so extra vigilance is required when using or handling scaffold at this time of year.

Traditionally, slips and trips related incidents increase in the period after the clocks change back from BST to GMT so you must ensure that you have adequate lighting and your intended path is clear of obstructions and hazards. This can lower your chances of having an accident, which makes for a more enjoyable winter.

**William Wood—HSE Advisor/Contracts Manager
Northern Region**

SAFETY AWARDS

June

John Freeman won the Northern award for not only being reliable and punctual but also for his impressive attitude to safety, which was recognised and acknowledged by the Principal Contractor

Dave Hastings & Dave Crawford won the London award for noticing a serious fire potential then rendering it safe and reporting the incident in the correct manner.

July

Glen Smith won the Northern award on the Laing O'Rourke, Hoyland site for working safely in difficult conditions and being able to sort out issues immediately. This was recognised by the Laing O'Rourke site manager.

Anthony (Freddie) Parchment won the London award on the McAlpine, Q3 site for when tasked with cutting materials with a power saw and without being told, erected an exclusion zone around his work preventing others being injured.

August

Carl Wood won the Northern award for insuring that all works on site at Vinci, Bents Green School, are carried out in a safe manner and paying particular attention to ensuring the scaffolds are kept in good order.

Sam Beatty & Dave Humphries won the London award on the Broadoak Construction, Queen Anne Chambers, for discovering and reporting a large crack that appeared in the top 3 floors of the building which could have resulted in a major collapse.

L
o
n
d
o
n



P
I
C
C
A
D
I
L
L
Y

MACE
Cafe Royal

Majestic Hotel - Harrogate

Tolent Construction



Benchmark are pleased to have been approached by our friends at Tolent Construction to provide access scaffolding and a temporary roof over the fire damaged wing of the Majestic Hotel in Harrogate, North Yorkshire. Tolent were called in the day after the fire and we were there the day after that.

The Majestic is aptly named as it is truly a splendid Victorian building retaining many period features. The fire and subsequent water damage is, however, extensive and there is a great deal of work to do.

Benchmark has erected a complex arrangement of access and support scaffolds to the South Elevation in incorporating a fully boarded rubbish chute and an Alimak Scando Hoist supplied by our colleague Steve Crompton (Manager of Benchmark Hoists).

To the North side we have a beamed arrangement at 4th floor level with scaffold punched up to access the two storey Mansard roof.

We also have a temporary roof spanning from the South to the North elevation scaffolds one of the photographs show the roof beams being raised by crane.

We acknowledge Tolent's Andy Shaw, Mark Standeven and Paul Askew together with Benchmark's Peter Spencer, Carl Payling, Dale Benson, Ryan Vickers & (on loan from London Region) Barry Lane, Dave Hastings and their teams.

**Paul Taylor—Director and Business Development Manager
Northern Region**

**Photos supplied by Peter Spencer—Contracts Manager
Northern Region**



The South Elevation scaffold
all ready for action

Ready to beam-up



The North Elevation scaffold &
Temporary Roof
under construction

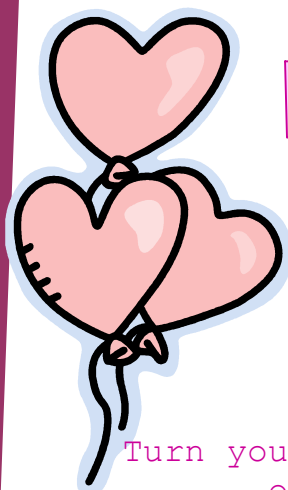
Photo supplied by Carl Payling
Site Supervisor—Northern Region

If you've recently had a new addition to your family,
or a birthday coming up
send us a photo to the Barnsley office
and we'll make sure we show them in the next edition
or you could email us

barnsley@benchmarkscaffolding.com



Carlos Wood
receiving his
Safety Award
from Cain Eggleston
Northern Region



wear it pink day
Friday
29th October 2010



Turn your whole world pink for one day and join thousands
of other people to help raise money for the

Breast Cancer Campaign.

Wear anything pink whether it be a pink tie or a full
pink outfit and donate £2 to a good cause. To join in
the fun contact Georgina at the Barnsley Branch or visit
wearitpink.co.uk

Contact Numbers & Offices

West London Office

Waterside Trading Centre, Trumpers Way, Hanwell, London W7 2QD
Tel: 020 8867 9977 Fax: 020 8867 9900
Email: info@benchmarkscaffolding.com

Northern Region Office

Max Darby House, Valley Road, Station Road Industrial Estate,
Wombwell, Barnsley, S73 0BS
Tel: 01226 755 922 Fax: 01226 755 166
Email: barnsley@benchmarkscaffolding.com

East London Office

1b, Whittings Way, London Industrial Park, Beckton, London E6 6LR
Tel: 020 7474 5346 Fax: 020 7511 6014
Email: beckton@benchmarkscaffolding.com
www.benchmarkscaffolding.com

Our mission is to
not only "Set the
Standards" but
to progressively
and continuously
raise them
across all aspects
of our business.

Our vision is to be
the scaffolding
contractor of
choice to our
customers and
employer of
choice to our
people.

BENCHMARK SCAFFOLDING LTD



Setting the Standards