

BENCHPRESS

New Year - New Ownership

Happy New Year to you all as I welcome you back to work after the well-deserved Christmas break. I am pleased to confirm that the Company we founded 18 years ago is now under new ownership following 18 months of association with RCapital.

On the 11th January 2013 the trade and assets, goodwill, order book, debtor book, name and brand of Benchmark Scaffolding was acquired using an existing company called, Prodrive Solutions Ltd, and we will continue to trade under the name of Benchmark Scaffolding. RCapital have been the majority shareholders of the company since July 2011. They have helped the business restructure its management systems and processes over that period and felt the time was right to sell us on to new ownership and a positive future without them. A management buyout, involving a syndicate of new investors, agreed the deal that will enable the business to move forward with new investment and a commitment to the long term prosperity of our company. I am pleased to remain as the Managing Director of Benchmark Scaffolding and confirm that the message is very much business as usual.

The senior management have been busy making personal contact with all of our customers to explain what has happened regarding the restructuring of the Company ownership and why. The news has been well received as they understand that the involvement of venture capitalist/turnaround investors tends to be more of a short term arrangement. We have been congratulated on managing to regain control of our business and support for us going forward has been total. This, I believe, is testament to the strong relationships we have forged over many years of association and gives me great confidence for the years ahead.

So, let's keep calm and carry on and thanks to you all.

Rob West
Managing Director

BENCHMARK SCAFFOLDING

Setting the Standards





M62 Flyboat Bridge

Our good friends at A one+ came to us for another 'interesting' job, this time spanning a canal at Whitley Lock, Eggborough. The job requires full access along the span of the canal so Concrete Repairs Limited can blast away all the damaged, no good concrete on the face of the bridge. One of the challenges was that we couldn't tie into the bridge as this would disrupt the carriageway, so it had to be free standing using kentledge, the other one was we only had a 4 day window to erect over the canal.

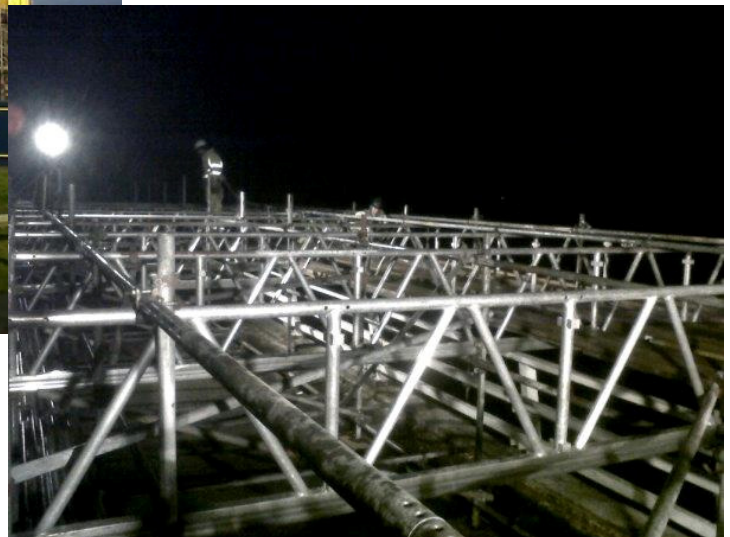


After many meetings & many revisions to the drawing thanks to the great Bob Young, everything was finalised & everyone was ready to go.

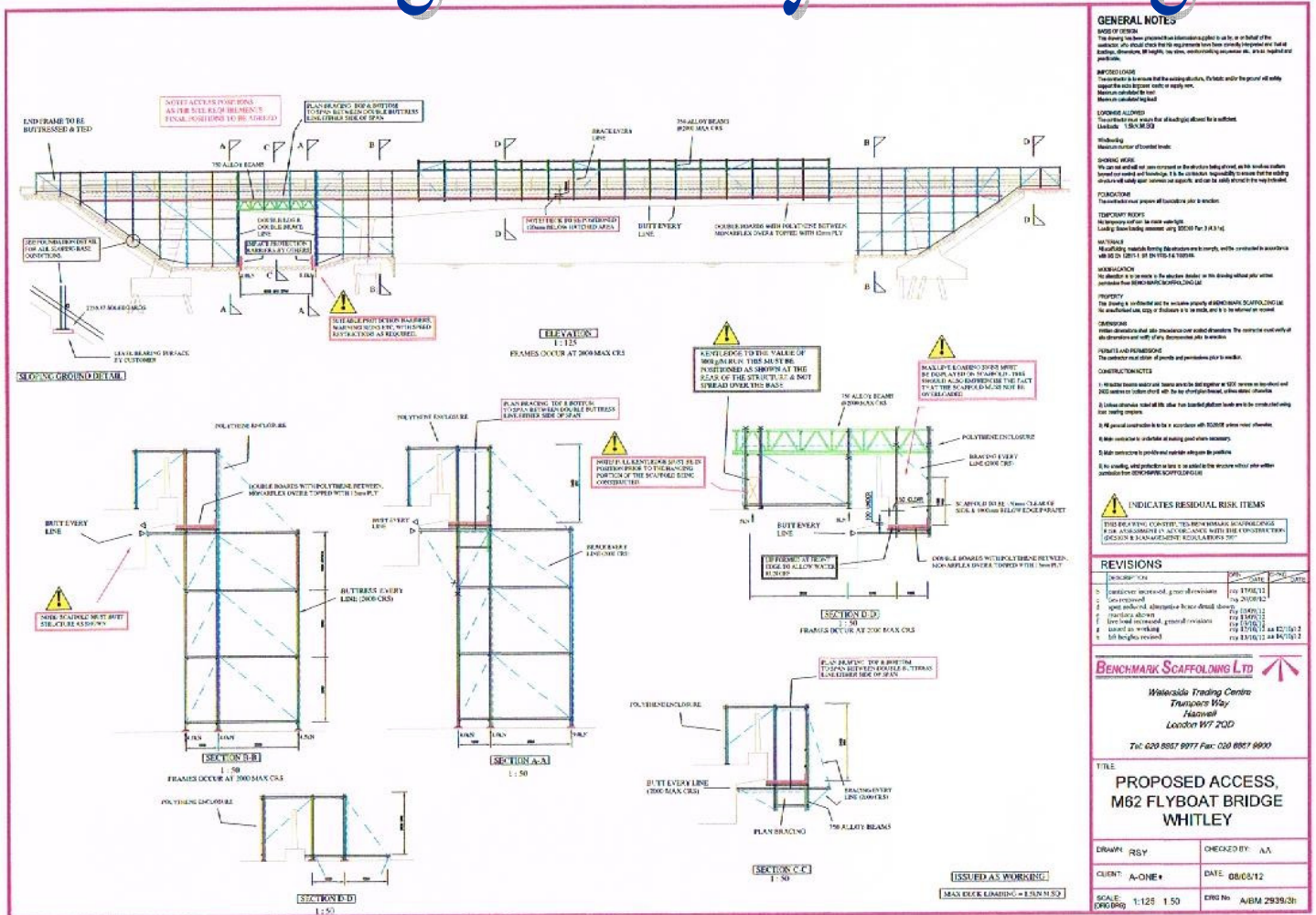
A big thanks to Wayne Griffin, Construction Lead at Aone+, Peter Spencer for monitoring the job closely (and continues to do so), Mark Bradbury for his clockwork like deliveries & Darren 'Wally'

Waltham for his excellent driving capabilities & of course, the scaffolders themselves, Paul Meadows, Kurt White & Gavin 'Digger' Dixon.

**Mark Knitter—Estimator/Surveyor
Northern Region**



Drawing for the Flyboat Bridge



Our **mission** is to not only "Set the Standards" but to progressively and continuously raise them across all aspects of our business.

Our **vision** is to be the scaffolding contractor of choice to our customers and employer of choice to our people.

Hanwell score again at Wembley!!



We have secured the next phase of the Wembley City development for John Sisk & Son, with an order value of £780,000. This phase is called The London Designer Outlet. The new building will house 85 retail outlets, 15 restaurants and bars and 9 cinemas. We have kept a lot of the same team that successfully completed the previous phase, headed by our site manager Tom Venables. The new structure is a concrete frame from ground to fourth floor and a steel frame from 4th floor to roof level. The façade is part brickwork and part curtain walling.

We are also negotiating the next phase which is the demolition of an existing car park and new build of a new multi storey car park worth over £100,000. Fingers crossed.

Eamonn Colledge—Contracts Manager
London Region

If you've recently had a new addition to your family,
or a birthday coming up
send us a photo to the Barnsley office
and we'll make sure we show them in the next edition
or you could email us

barnsley@benchmarkscaffolding.com

The Lighthouse Club Champagne Reception at The Ritz London



Rob and Bernard attended a champagne reception at The Ritz in September hosted by The Lighthouse Club charity.

The guest list included an abundance of Managing Directors, CEOs and Chairman of many of the top companies within the industry. It was the perfect opportunity for networking and to show their support for the Lighthouse Club Charity.



Sean Fitzpatrick, Chairman—VGC & Cole Hire
Bernard McDermott, Executive Director, Benchmark Scaffolding
Nick Curran, Managing Director, Avondale
Kevin Clancy, Managing Director, Clancy Docwra



THE RITZ LONDON



Rob West, Managing Director, Benchmark Scaffolding
Rebecca Evans, Editor, Construction News
Jeffrey Adams, Group Chief Executive, United House

Please see below for their official press release:

PRESS RELEASE

"WE SHOULD ALL BE DOING MORE FOR OUR WORKERS" ANNOUNCES CHARITY PRESIDENT

The Lighthouse Club, the construction industry charity, launched ambitious plans for growth at The Ritz in London, at a top VIP event on 11 September. The charity intends to extend its reach beyond helping construction workers and their families who have been plunged into financial crisis because of illness, injury or death.

Key companies and organisations from the construction sector were represented by over 100 of their CEOs or Chairman including Laing O'Rourke, BAM Nuttall, Keepmoat, Willmott Dixon, Vinci, Morrison Utility Services and Imtech as well as CICES, CIOB and ICE. Sir John Armitt, Chairman of the Olympic Delivery Authority also attended.

Doug Oakervee, the President of The Lighthouse Club and also Chairman of HS2, delivered a heartfelt plea to the industry to look after their own workers. He said: "In 2011 the Gross Value Added of the UK construction industry was £90 billion with 2.04 million jobs. We raised £500,000 in donations for construction workers in the same year, but the huge majority of that money was from the efforts of volunteers raising funds, not donations from the industry itself. We should all be doing more."

The charity has recently taken on a new chief executive and wants to significantly increase the services it can offer such as education, training and help with apprenticeships, as well as assistance to those facing financial hardship. Mr Oakervee continued by explaining the new changes and by asking companies to look at other ways in which they could help, if donations weren't possible in this economic climate: "Instigate a work place giving scheme, or make us the 'official charity' in your organisation. So many of your staff raise money for other charities, surely they should be encouraged to raise it for their own industry charity instead?" he added.

To find out more about the Lighthouse Club and how it can help construction workers and their families, or to make a donation visit: www.lighthouseclub.org

The Lighthouse Club has so far donated £10 million to construction workers and their families in need of financial assistance

It has 22 branches in the UK and the Republic of Ireland which raise money through sponsorships and events
There are also overseas branches in Asia and the Middle East, including Cambodia, Manila and Abu Dhabi

END

Benchmark Scaffolding have been an annual corporate sponsor of the Lighthouse Club for many years.

Contact Numbers & Offices

West London Office

Waterside Trading Centre, Trumpers Way, Hanwell, London W7 2QD

Tel: 020 8867 9977 Fax: 020 8867 9900

Email: info@benchmarkscaffolding.com

Northern Region Office

**Max Darby House, Valley Road, Station Road Industrial Estate,
Wombwell, Barnsley, S73 0BS**

Tel: 01226 755 922 Fax: 01226 755 166

Email: barnsley@benchmarkscaffolding.com

www.benchmarkscaffolding.com

BENCHMARK SCAFFOLDING



Setting the Standards