

# BENCHPRESS

Well, it's only been three months since the Christmas Benchpress and, as promised, here is the next edition of our quarterly newsletter. I also promised photos of our two new HGVs but they will be at the body shop for a week or two longer having Hiab cranes fitted and other specialist equipment so it will be the summer edition for them. Similarly, although negotiations are progressing very well we cannot confirm the next two phases of parliament cast iron roof replacement works yet so that will be summer news as well. However it does look like both phases will be placed as one combined order and if we do nail it that would be our biggest ever single award beating the £3.5 million order, from Aspire defence, for the MOD works down at Stonehenge that we secured late last year.

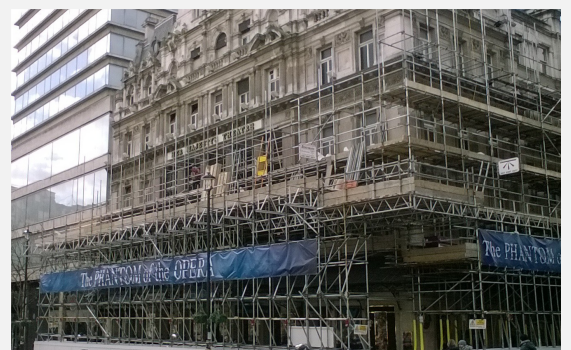


The front page photos this time are from theatre land, in the West end of London, and include views of Her Majesty's Theatre, with and without scaffolding, and the Cambridge Theatre where we have previously worked and will be starting another new phase this week. We have also worked on the Theatre Royal, Drury Lane and are hopeful of securing our next theatre job at the London Palladium. This run of theatre work is not just a coincidence of course, our customer for this work, Stonewest have a good working relationship with *The Really Useful Theatre Group* and repeat work results, both for Stonewest, and in turn for us. I have



not been offered any free tickets yet for any of the shows but we live in hope.

Just as we were about to go to print with this edition we heard news of the long-awaited decision from Yorkshire Water regarding the extension, for the next three years, of the maintenance contract that Benchmark have been involved in for the last decade. The news was not good – they have decided not to renew at this stage and have selected an industrial multi-service company to replace us. This is disappointing but we have been disappointed before. It is not what happens to you in life that matters but how you react to what has happened that determines the result or outcome. We will conclude our contract in a professional and dignified manner and leave with our heads held high. We have delivered a fantastic service throughout Yorkshire on this contract and we are sure nobody else will be able to replicate our product going forward. This situation is now an opportunity for us to redirect our excellent teams of highly trained and motivated operatives towards other opportunities. Each mobile gang of three is led by an experienced black hat and they all have a terrific work ethic and they will be well received by whichever of our customers is lucky enough to be served by them in the future. These squads, which we used to refer to as the *Water Boys*, will need new nick names – any ideas? (Keep it clean please).



In the Christmas edition I mentioned a charity cycle ride (London to Brighton) that was being organised by Bob Young. Well, **Team Benchmark** is now assembled and we aim to raise a combined total of £5,000. Details of the event, and how you could support it, are on the back page. Any donation, however small, would be appreciated and it's all in aid of Children with Cancer UK.

As always I thank you all for your continuing loyalty and commitment and I hope that you all enjoy the spring sunshine and the promise of better weather ahead.



## BENCHMARK SCAFFOLDING

*Setting the Standards*



Regards, Rob West – Managing Director

Issue 30  
Spring 2017



# Piccadilly Lights Update

The three photographs show the before, during and after completion of the erection of the gantry and access scaffold to the front of this iconic sign. The gantry towers and frontage have been covered in banners advertising the shops below that will have their shop fronts covered for the next six months.

The main access scaffold above has been covered with five separate advertising banners. These have been stretched over a Key Clamp type frame work attached to the front of the scaffold and stands off approximately 300mm from the scaffold. Due to the additional loadings on the scaffold, three additional levels of ties, one to every standard and plan bracing, had to be incorporated within the scaffold.

The scaffold was erected on programme in the agreed four week period with the banners being fixed a week later.

Our team on this project has been Steve Valentine, Anthony (Fred) Parchment under the guidance of site manager John Henry. They are following on with the erection of two 500kg lifting beams, access scaffolds and Haki stairs off the second floor roof at the back of the building that the signs are supported from, and a temporary roof system over the existing cradle track which is to be replaced with a new one. This work is being carried out for a new client to Benchmark who are Oakmont Construction from Harlow in Essex.

**Eamonn Golledge—Contracts Manager**  
London Region



Our **mission** is to not only "Set the Standards" but to progressively and continuously raise them across all aspects of our business.

Our **vision** is to be the scaffolding contractor of choice to our customers and employer of choice to our people.



# HEALTH CARE ON OUR SITES



On the 22 February, Benchmark entertained 22 doctors and trainee doctors at a Wates Contract at Millbank House. Keith Dunk (BSL Site Manager) and myself escorted the doctors in two groups around the site pointing out the hazards and the potential injuries or medical conditions that can arise from the various tasks carried out on site. We then all assembled in the site canteen where Lee Jones answered questions fired at him by all the doctors. Stuart Emm, Wates Site Manager, closed out the session with a brief description of the project and welcomed feedback from the doctors. The visit was scheduled to last 1 hour but the interest shown by everybody pushed it out to nearly 2 hours. The whole session went really well with some very good comments from the doctors saying that they learnt a lot and were impressed by our knowledge and presentation. They also said

that they would like to do another visit in the near future. The photo shows all the doctors in the canteen being lectured to by Lee Jones, and below is a copy of a thank you email from one of the delegates.

**From:** Janice Constable

**Sent:** 23 February 2017 11:32

**To:** Peter Booth; Keith Dunk

**Cc:** PATTANI, Shriti (LONDON NORTH WEST HEALTHCARE NHS TRUST); Jess Davies

**Subject:** RE: site visit

*Dear Peter and Keith,*

*Thank you SO much for the excellent site visit yesterday – it was a perfect fit with the course! All the delegates thoroughly enjoyed the talks and had lots of praise for you and your staff today.*

*Very best wishes*

Janice Constable  
Membership and Events Director  
**Royal Society for Public Health**  
[www.rsph.org.uk](http://www.rsph.org.uk)

**Peter Booth—Company H&S Manager**



On the 30 January 2017 Andrew Raghbir, from our Hanwell Branch, and his partner Amanda Ruff became proud parents of Sienna Annabella. She weighed in at 6lbs 15 ozs

## Jessicat

Following the unexpected departure of Galore, the yard cat, who appeared in previous issues of Benchpress, it is fitting to announce the arrival of her replacement.

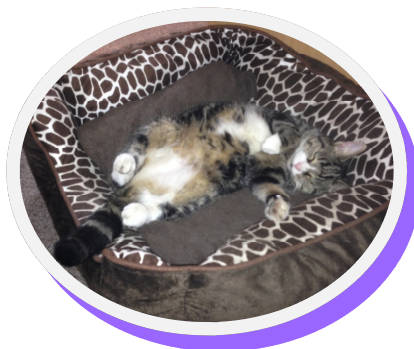
This is Jesse who joined the yard crew during 2016.

She is usually found within the warehouse and yard where she does sterling work on pest control.

Although it must be said that several of the yard crew are proving quite resilient to her efforts!

Within the scaffold contracting work Jessica favours mews properties and is always keen to add the appropriate claws to our quotations.

Paul Taylor—Estimating Director  
Northern Region





# Accident Frequency Rate ZERO

In February Benchmark Scaffolding achieved another full year without a RIDDOR reportable accident. This is the third time in the history of the company we have accomplished this.

This is a great achievement considering we have about 200 operatives, 25 yard/drivers and 34 office staff. We have suffered 6 minor incidents this year to date, which is an increase on last year, but I hope we can put that down to better reporting by the operatives. Mike Hanger introduced a new incident reporting form this year which initially is to be filled out by our site managers and then passed on to the safety team. We will make sure the incident is closed out. Also Lee Jones has produced a near-miss card that is available on site for the operatives to fill in and send back to the office. This will improve our accident reporting process and could lower our accident rate.

Peter Booth – Company Safety Manager

Record your safety suggestions and any near misses by making a note on the back of this card, hand it to your Supervisor.

Thank You

BENCHMARK SCAFFOLDING  
Setting the Standards



## December Safety Award



The monthly safety award goes to Tom Venables, Sisk, Maiden Lane, for being top of the safety leader board for 3 consecutive months.

## January Safety Award



The monthly safety award goes to Damien Moxon, Light Cinema, Robertson Construction, for impressing them with his outstanding approach to safety and the excellent management of the contract.

## March Safety Award



Wates Project, Tasman House, The BSL operatives won £100 for “quote” *The Benchmark team have demonstrated exceptional compliance with the Wates PPE and behaviour standards, always well presented, they are a credit to the project.*



The Scaffolders that received the award are, Jason Marshall, Simon Dabbs, Pawel Wisniewski, Pawel Misiura, Reggie Iziren, John Abella, Ryan Payne, BSL Site Manager, and Barry Lane, BSL Operations Manager. The award was presented by Gary Smith, Wates, Operations Director.

The monthly safety award goes to Ryan Payne for the above reason and for the way he has stepped up to becoming a site manager. He has run this site exceptionally well with excellent scaffolds and the way he manages his men and safety.



We  
are  
back  
at



## Westfield, White City

It was about 11 years ago that we started working at Westfield, White City, for a company called Waagnor Biro. We erected a birdcage to enable them to install the main atrium roof which is similar to the mall roof you can see in the picture, only on a grander scale.

Once we were established on site we secured work for Westfield direct and have been their go-to scaffolding contractor ever since, working on the Stratford City project, Bradford Shopping Centre and now back to White City for phase 2 extension. In between we have worked on various smaller projects at Stratford and White City where Westfield have made improvements alterations and extensions.

The White City phase 2 works are proving to be the most challenging yet as the works are in the close vicinity of the largest shopping centre in Europe and the works include a vast amount of demolition, including the removal of a concrete core (the temporary roof in the far distance is weather protection for some of the demo works). This work will ultimately create a continuous shopping mall from the original centre through a new 120 metres of mall to the new John Lewis Store.

The mall roof is being built with the assistance of the 3 x mobile platforms you can see in the picture, these span 18m and are running on Haki track which sits in steel channels, these have been erected for NA Curtain Walling.

The temporary roofs in the picture are over mall voids and are weather protection for the stone floor being installed on the shopping mall floor below, a third roof, twice the size of the first one is in the progress of being erected.

During the decade in which our special relationship with Westfield Europe has evolved we have also discovered a new customer base with numerous shop fitters and other firms who specialise in shopping centre projects, and we estimate that our related turnover is now approaching £20 million.

Graham Laffar—Project Manager  
London Region





# Como (Mace Group) Fit Out 338 Euston Road

COMO specialist fit out company and part of the Mace Group undertakes refurbishment of 338 Euston Road for British Land.

British Land signs new lease with Facebook to occupy Level 5 and Levels 9 through to 16 at 338 Euston Road which forms part of their prestigious 13 acre mixed use campus at Regent's Place close to Euston. The campus which is fully let is home to 45 office occupiers as well as multi-storey residential developments. It is centred around Regents Place Plaza a public space that plays host to an array of prestigious events and serves as popular place for people to meet, eat and spend quality time.

338 Euston Road provides 112,000sqft of modern Grade A office space over 17 storeys and was subject to comprehensive refurbishment of proposed levels to be occupied by Facebook.

Benchmark Hoists as part of the Como Team were involved in developing a Hoist scheme to cause minimum disruption to existing occupiers of remaining floors. The Hoist was tied in to the building structure permitted only at unoccupied levels. A system of aluminium bridges was designed and fabricated to access each floor through only one glazed panel which required removal at each of the refurbished levels and hoist ties through window openings – all of which were then sealed to maintain full weather protection during the works.

The podium area around the Regents Place Campus has loading limitations and the transfer and install of the Hoists required careful planning and designed temporary works to spread the loads.

The project was fast track such is the demands of the client and ALL works from planning to completion were undertaken inside 26 weeks with final handover in January 2016.

Steve Crompton—Director, Hoist Division  
London Region



# Lendlease Rathbone Square Development



Lendlease are presently nearing completion on £150m main construction as part of overall £500m development for Great Portland Estates at Rathbone Square on former Royal Mail site in central London off Tottenham Court Road / Oxford Street.

The scheme includes 42,000sqft of retail space as well as 217,00sqft of offices over 7 levels and 155,000sqft in 162 residential units over 9 levels.

The mixed use scheme will deliver Grade A offices and prime residential units around a new public square offering restaurants and boutique retail space.

Rathbone Square residential has three types of apartments to choose from: The Apartments, The Rathbone Collection and The Penthouses. Looking to buy in this development? You'll have to be quick as at February 2017 139 of the 142 apartments have been pre-sold! Twenty further one bed apartments are also available at discounted price for local residents in Westminster as part of the agreement.

Lendlease engaged Benchmark Hoists and Scaffolding to provide a complete design solution due to the need for Hoisting with runoffs whilst maintaining critical clearances sometimes less than 80mm (floor to soffit) for the cladding systems to preload the floors. This required considerable design input to provide the final solutions.

Both the Residential and Commercial Blocks required independent access and Hoisting – generally this comprised twin Hoists on both blocks to include an AlimakHek 650 Passenger/Goods Hoist combined with a big cage Goods Hoist to facilitate the larger cladding panels.

In the basement a Goods Hoist was installed in a car stacker void to serve ground to basement levels.

The main external Hoists were installed on a stage climb basis to follow the structural build program and a strict maintenance program to ensure reliable service throughout the busy construction and fit out phases.

Completion is planned for Spring 2017 – the Hoists have now all been dismantled from site, but Benchmark Scaffolding still have a big part to play supporting Lendlease and other trade contractors on site.

This is a further clear example of Benchmark Hoists securing the Hoist package to include associated Hoist related scaffold works which subsequently develops into a site wide scaffold supply agreement.

Steve Crompton—Director, Hoist Division  
London Region



If you've recently had a new addition to your family,  
or have a birthday coming up  
send us a photo to the Barnsley office  
and we'll make sure we show them in the next edition.  
Or you could email us:

**barnsley@benchmarkscaffolding.com**



The Do it for Charity London to Brighton Cycle Ride is a mass-participation cycle ride covering the 54 miles from Clapham Common in London to Madeira Drive on Brighton sea front. In 2017 the ride will take place on **Sunday 17th September** and over 4,000 riders are expected to take part.

Once the cyclist are out of London they will predominantly cycle along quiet country lanes passing through Mitcham, Carshalton, Chipstead, Banstead and Haywards Heath before taking on the challenge that is Ditchling Beacon - a mile long climb to the top of the South Downs where they will be rewarded with amazing views and a water break!

From here they cycle downhill the last few miles onto Brighton sea front.

Benchmark's team leader is Bob Young and he has recruited the following participants so far:

Hitesh Patel  
Lee Jones  
Barry Lane  
Andy Dobson  
Joe Laffar  
Keith Slight  
Daniel Slight  
James McDermott  
Rob West  
Maria West  
Peter Booth  
Michael West  
Mick Young  
Ricky Lovett  
Bernie McDermott (the 'fitter' not our Director)  
Graham Parker  
Steve Wright (guest from Lend Lease)

They will be raising money for the much deserved charity **Children with Cancer UK**.

This charity wants to help more children with cancer across the UK. That's why they invest millions of pounds every year in essential research, and welfare programmes and raising awareness.

Almost 4,000 children and young people are diagnosed with cancer every year in the UK. That's ten every day.



The types of cancer affecting children are quite different from the cancers that affect teenagers and young adults (TYA); TYA cancers are different again from the types of cancer that typically affect adults aged 25+.

Thanks to investment in research and treatment, survival has increased dramatically over the past 50 years and four out of five young cancer patients can be successfully treated.

If you would like to join the team please contact Vicky in the London office. If you would like to sponsor the team donations can be made online at the following address: [www.justgiving.com/teambenchmark](http://www.justgiving.com/teambenchmark)



#### Contact Numbers & Offices

##### West London Office

Waterside Trading Centre, Trumpers Way, Hanwell, London W7 2QD  
Tel: 020 8867 9977 Fax: 020 8867 9900  
Email: [info@benchmarkscaffolding.com](mailto:info@benchmarkscaffolding.com)

##### Northern Region Office

Max Darby House, Valley Road, Station Road Industrial Estate, Wombwell, Barnsley, S73 0BS  
Tel: 01226 755 922 Fax: 01226 755 166  
Email: [barnsley@benchmarkscaffolding.com](mailto:barnsley@benchmarkscaffolding.com)

[www.benchmarkscaffolding.com](http://www.benchmarkscaffolding.com)

# BENCHMARK SCAFFOLDING

*Setting the Standards*