



# BENCHPRESS



## LOOK TO THE EAST

In January I contacted the CITB, to arrange the scaffolder training for the whole year, only to be informed that all their training centres in England were fully booked for all of 2007.

We do have a training provider in Wakefield which is handy for the Barnsley men but for the Londoners it was a bit of a trek. Places at this centre are minimal and this has been causing a major problem.

Then, whilst looking for a new yard in East London, we found a piece of land in Beckton. These premises had a suitable yard and attached were some offices and a warehouse. The offices can be transformed into classrooms and the warehouse into a practical training centre. Things are now proceeding and we are looking to open this centre in January 2008.

Initially we will be doing "Part One" courses followed shortly by "Part Two". Advanced courses will be commencing later in the year.

Please do not call me saying gimme, gimme, I do have a plan!

Peter Booth—London Region  
Safety Manager

### Head Office & London Region:

Waterside Trading Centre  
Trumper's Way  
Hanwell  
London  
W7 2QD  
Tel: 020 8867 9977  
Fax: 020 8867 9900  
Email: [info@benchmarkscaffolding.com](mailto:info@benchmarkscaffolding.com)

### Northern Region Office:

Max Darby House  
Valley Road  
Station Road Industrial Estate  
Wombwell  
Barnsley  
S73 0BS  
Tel: 01226 755 922  
Fax: 01226 755 166  
Email: [barnsley@benchmarkscaffolding.com](mailto:barnsley@benchmarkscaffolding.com)



## Benchmark goes "East"

*Benchmark Scaffolding is expanding to a new site in East London on the London Industrial Park, Beckton.*

*This will allow Benchmark the opportunity to serve new and existing customers better, having the ability to access the City and East End areas of London that much quicker. The location of the new branch also offers links with all the major roads in and around London and the South East. (A12, M11 & M25).*

*With many Major Construction sites being established, around East London and the South East, at a great rate (none more so than The Olympic Site in Stratford) Benchmark see this new location as a great addition to its existing West London based operation. It means we now have the opportunity to push out into the Essex and North into Hertfordshire as well as better links to all areas of London.*

John Walton—London Region  
Estimating Director



## Irvine Whitlock, Helles Barracks, Catterick



This scaffold will be erected using the Haki system and the job is estimated to last for 26 weeks

We have also just won some new jobs in Manchester one of which is for Carillion on the Abito site and also for Whelan & Grant on the same site. Another is Belvedere House for E.A.G which started on the 19th November 2007.

We also started work for Interserve working on one of the Leeds new schools in Pudsey.

Keith Lawson—Northern Region  
Contracts Manager



Our **mission** is to not only "Set the Standards" but to progressively and continuously raise them across all aspects of our business.

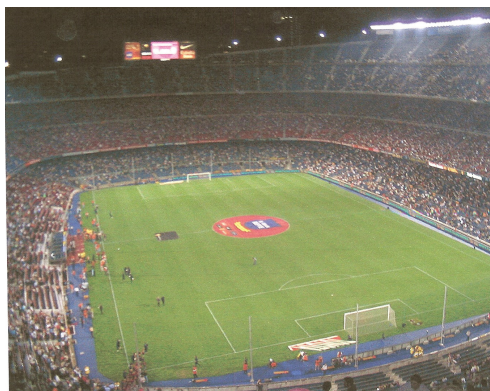
## Barnsley to Barca

Our **vision** is to be the scaffolding contractor of choice to our customers and employer of choice to our people.

On Friday 23<sup>rd</sup> November Paul, Debbie my wife, and me of course had the opportunity to visit the Nou Camp the home of FC Barcelona, who could look this gift horse in the mouth? So, just after breakfast, we took the 15 minute or so walk down to the stadium. As we approached the stadium it looked quite normal with lots of concrete, fences and lots of little ticket booths around three feet wide built as part of the fence. Although as I have said it looked quite normal, we could feel the history and passion of the club.

As we entered the car park there were a group of people hanging around what looked like an exit from an underground car park with yellow plastic pedestrian barriers round it. We soon worked out they were waiting for that moment of a life time to get a photo of one of the best modern day footballers in the world. We headed straight for the club shop that sold everything from the official team kit to Dog toys and even Manchester Utd shirts.

There I was like a kid in a sweet shop and just as giddy. After a while and a few euros less we agreed it was time to do the stadium tour. Yippee, or so I thought, but as we approached the ticket office the chap behind the counter smugly pointed his pen at a sign stating that, due to training, the tours didn't start again until 1.00pm. This gave us two hours to wait, outside was a static burger van cum café so we had a coffee and decided to take our haul from the club shop back to the hotel and come back in time for the tour to start.



Back at the stadium we purchased our tickets and got ushered into a room with benched seating for around fifty people and were handed 3D Glasses. We took our seats and after a few moments the show started with lots of footballs coming at us along with the Barca club badge and travelling down tunnels to various parts of the ground and having a virtual game with the Barca stars.

We made our way to the stadium entrance and started the self guide tour following the tour signs. The first point of any interest was the changing rooms and shower/bath area. This was a bit disappointing as it had nothing special at all, tiled floors and walls and two treatment tables and the old big round bath in the middle of the shower block. If you didn't know where you were you could have been at Wombwell swimming baths! Having said that, the greatest teams and players in the world had stood where we were.

Down the tunnel we went and just to the right they have a small chapel of all things to say your last minute prayers. Just ahead is the opening onto the pitch. Barrier tape was everywhere to keep you off the pitch and out of the dugouts. The pitch measures 105 x 68 metres and on match days is surrounded by over 100,000 fans that fill the stands. We were able to access the press area, where the players are interviewed after the game, and also the president's box and seating area.

Next came the museum but there was just too much to tell for a club with over a hundred years of history since the club was founded in 1899. If you need to know more - go yourself!

Cain Eggleston—Northern Region  
Commercial Director

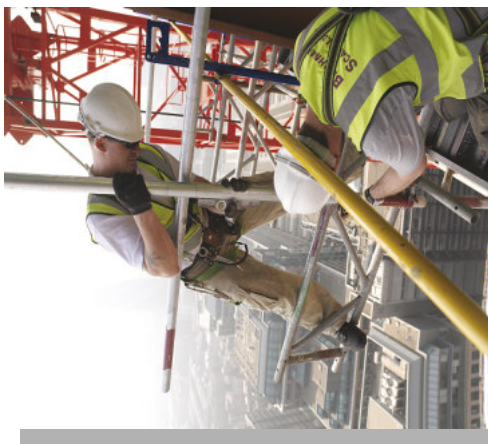
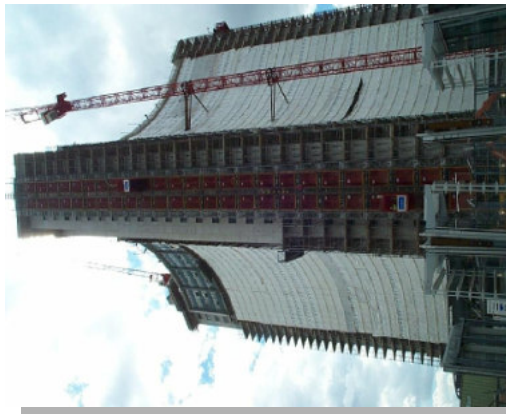




# BENCHMARK SCAFFOLDING LTD



*Setting the Standards*



London Region: 020 8867 9977      Northern Region: 01226 755 922

# Do you recognise these sites?



If you've recently had a new addition to your family,  
or a birthday coming up  
send us a photo to the Barnsley office  
and we'll make sure we show them in the next edition  
or you could email us



[barnsley@benchmarkscaffolding.com](mailto:barnsley@benchmarkscaffolding.com)



May we take this opportunity of thanking all employees for all their hard work and all customers for their business during 2007 and assure you that we look forward to continuing our association through 2008. Best wishes and happy new year from **Benchmark Scaffolding Ltd**

### Christmas Pay Arrangements

The final pay day before Christmas will be the 21st December 2007. The next pay day will be the 11th January 2008.

### Special Birthdays

A big thank you to ALL who contributed for the Birthday collections for Florence McDermott & John Walton. We collected a total of £722.50

Keira Leoni—London Region  
Administrator

**Proud dad**  
**Mark Cummins -**  
**currently working on**  
**the White City Project**



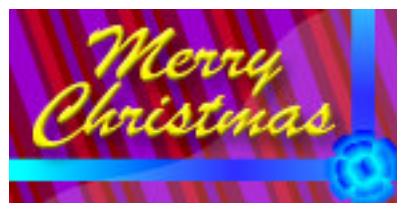
Sunderland's new supporter

**Connor-joseph**  
**7lb**



After 20 years of marriage Kath and Keith Lawson are still going strong.

Well done



**BENCHMARK SCAFFOLDING LTD**



*Setting the Standards*



# Saville House

Saville House is located near to Sheffield's historic Wicker Arches. It was built in the 1960's and is actually cantilevered over the River Don. It was a nine storey warehouse/storage building owned by HSBC. The concrete waffle and brick building is to be stripped out and changed into a modular steel clad building with around 100,000sq ft of office space plus a 277 space car park adjacent.

With the building being cantilevered over the river and having an old disused cotton mill (which is a listed building) on the side, Benchmark had to overcome this. So with the expertise of Benchmark's design team they came up with the method of using a 750mm haki beam structure, cantilevered out of the building on the 1<sup>st</sup> and 3<sup>rd</sup> floors. There was a hanger erected off the 1<sup>st</sup> floor beams down to the ground floor and then cantilevered again this time using 450mm haki beams 8m wide.

Then there was the problem of overcoming the listed building, how would both elevations meet? With the help of 2 sets of 450mm deep RSJ steel girders 6.5m long, trussed out of the building by 25m on the 2<sup>nd</sup>

and 4<sup>th</sup> floors an independent was punched up off the girders up to roof level on one side of the river/ listed building. On the opposite side a 14m x 8m x 8 lift buttress with ladder beams built on the 8<sup>th</sup> lift was erected. The beams once again cantilevered into the main building thus allowing Benchmark to then erect a double box beamed cantilever section again using 750mm haki beams on 2 separate levels spanning 24m in length over the listed building's roof, joining both elevations together.

After that the rest of the elevations were straight forward independents built up off all these cantilever sections. It was then wrapped in monarflex and debri netting.

We would like to thank all the men involved in working on this unusual project.

Congratulation guys on a job well done.

**Wayne O'Loughlin-Northern Region  
Site Supervisor**



Merry Christmas and a Happy New Year



# Grand Prix - A Grand Ending



This year's season of Formula 1 Grand Prix was the most exciting for many years. After almost a decade of dominance by the blisteringly quick, but intensely boring Ferrari and Michael Schumacher combo, where the drivers' and constructors' championships were usually clinched by race 12 (of around 17), entertainment returned to the fastest sport in the world.

2007 was different; a young 22-year old, Lewis Hamilton, who had not before raced in F1, was recruited by the McLaren team to support the 2005 & 2006 champion, Fernando Alonso, who they had lured away from Renault. It was obvious, from seeing winter testing times, that the McLaren was going to be a front-running championship contender throughout the season (unlike Renault) and so Alonso had probably made a smart move. By the time the championship started in Australia, back in mid-March, he had his eyes firmly set upon a third title.

Alonso lost the first race, coming 2<sup>nd</sup> to Ferrari's Kimi Räikkönen, but won nos. 2 & 5 (in Monaco) and left the Riviera in the championship lead.

However, young Hamilton, who had achieved 2<sup>nd</sup> or 3<sup>rd</sup> place at all races so far, started to win and, by race 7, had emerged as the new championship leader. To the amazement of millions of enthusiasts, he retained this status to the last race, at Sao Paulo, Brazil in mid-October. However, because of the consistently good performances put in by both Alonso and Räikkönen during the season, Brazil promised much excitement, as any one of 3 drivers could be crowned 2007 champion.

At the start of the race, where Hamilton had bravely earned 2<sup>nd</sup> place on the grid during the qualifying session, he only had to finish in 5<sup>th</sup> place or above, to enter the record books as (1) the first driver to win a championship in their debut season, and (2) the youngest champion.

Alas, this was not to be; Hamilton's start, once the lights went out, was scruffy and he soon found himself dropping back to 4<sup>th</sup> place after only 2 laps. An audacious move on Alonso, whose car was in front of Hamilton's, saw him bouncing across the rough grass verge and losing more places to those cars close behind him. A gear selector problem (probably caused by his earlier venture off track) caused him to drop to a miserable 17<sup>th</sup> position about halfway through the race.

A valiant effort on the part of Hamilton helped him to claw his way back into the top 10 runners, but he only managed to cross the finish line in 7<sup>th</sup> place. The emergent champion was not even Alonso, who had been stalking Hamilton in 2<sup>nd</sup> place for most of the season, but was 3<sup>rd</sup> man Räikkönen, who took both the race and the championship (by 1 solitary point ahead of Hamilton) in the same instant.

Upon reflection, weighing up the mixtures of talent, experience and sheer raw nerve, probably the best man won in the end.

Graham Pope—London Region  
General Manager

## SAFETY AWARDS

**To the right are some of our employees who have won Safety Awards over the past few months.**

### Company Safety Awards

**Neil Lax  
Dave Hastings  
Andrew Bradbury  
Ray Easden  
Graham Parker  
Fabiano Wilbraham  
Shaun Dundas**

### Individual Site Awards

**Tony Meacock  
Dean Gallagher  
Andy Bainbridge  
Lee Gallagher  
Paul Smith  
Rob Heath  
Dean Gardner  
Karl Barwise**

## New Haki Roofing System Quakers Friars, Bristol

Barry Lane & his team of Lee Jones, Gary Hagger, Dave Crawford, Dave Hastings & Cheska Andriuskeicius have just completed a large free standing temporary roof at the Quakers Friars Project in Bristol for Ian Bird of the Linford Group. The job has been constructed using the old 750 beam arrangement with the new haki Cassette sheeting system. Barry's team developed a special squirrel line to aid with the erection of the 750 alloy beam over the 20.0m spans.

The roof is probably the best & certainly the most expensive on the market. Rob West stated "I openly encourage our engineering team to use the haki 750 alloy beams at every opportunity & so the expense".



Bob Young—London Region  
Technical Director