

BENCHPRESS



Welcome back to the autumn edition of Benchpress and the news that Team Benchmark all survived the London to Brighton charity bike ride! We exceeded our fundraising target, set initially at £5k, by more than double as we banked just under £12,000 (including gift aid). Most went to Children with Cancer UK and some people opted for an alternative second charity; Animal free research, which also received a couple of thousand pounds. Thank you all so much for your donations which numbered over 200 contributions and these were received from friends, family, employees, customers, suppliers and even our competitors in the scaffolding world. Photos featured include Team Benchmark assembled at the start line on Clapham Common, Our team leader Bob Young with his medal, as well as me, beer in hand with my medal, certificates from the charities and our latest new lorry – nothing to do with cycling I know but we could not fit it in anywhere else. Oh well, suppose we had better start training for next year's ride soon.



Other news at the moment is that we are now underway with the major £5 million + project at the Palace of Westminster - no not *Big Ben* – the much more difficult cast iron roof replacement works which, by the way, are worth twice as much to us as the Queen Elizabeth Tower would have been. We start another £5 million project for Sisk at Wembley in the New Year and we are expanding our project down at Stonehenge, where we are involved in building the barracks and associated assets for the troops coming home from Germany, where we have picked up lots of extra work on top of what was previously our biggest order.

We are also underway with a full revamp of our website where we have engaged a specialist company to bring it into the 21st century and a launch date will be confirmed to you all in a future edition of our newsletter.



Certificate of Appreciation

Awarded to
Benchmark Scaffolding
upon successful completion of the
DIFC London to Brighton Cycle 2017
and in grateful acknowledgement
of sponsorship totaling
£8,995

towards our vital work for
children with cancer

Elaine O'Sullivan
Chairman of Trustees



Keep safe and thanks for all you do for the Company.

Regards, Rob West
Managing Director



BENCHMARK SCAFFOLDING

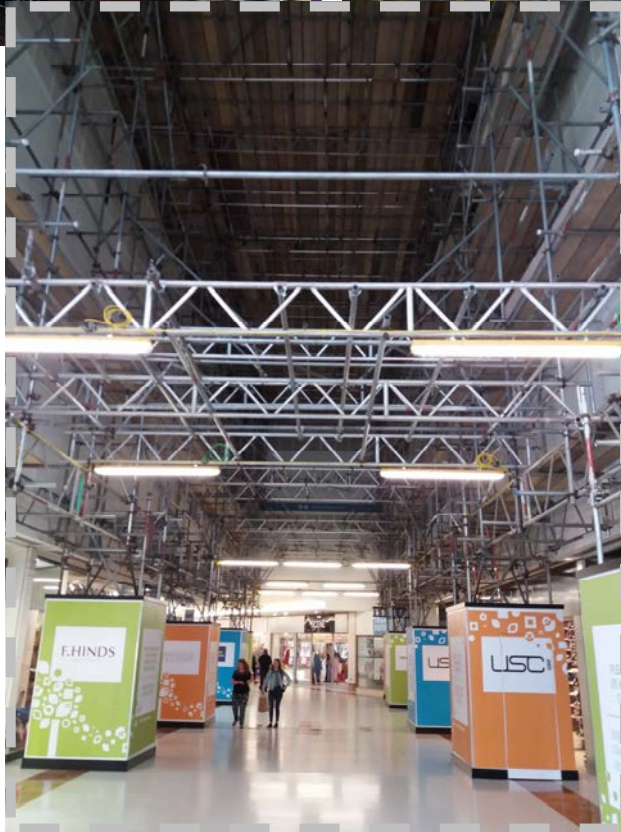


Setting the Standards

Hempstead e m e i The Marlowes Shopping Centre



London were awarded a contract by JPW Osprey Limited to design, supply, erect and dismantle bridged birdcage access scaffolds inside the five Malls within the shopping centre, each Mall also required a temporary roof covering. This was all required to allow the old glazing and metal work to be replaced. The Malls have to remain open during the whole of the works, so the internal scaffolds are being erected and dismantled between 21.00 hours and 06.00 hours. The Malls cover a total of 28,469m³. To minimise the works impact on the shops the scaffold was designed as a series of towers with beams bridging over the shop doors and windows. Benchmark also employed the carpenters to erect the hoardings around each tower. The scaffolds are then raised to high level with beams spanning from side to side. The top deck consists of a single layer of boards covered in polythene, then a 12mm plywood overlay was fixed down. The edges were sealed to the main structure using the foam tubing, we use on standards, fixed to the edge of the plywood all around the top. We also had to form chimneys, made out of plywood, through the



platforms to allow smoke to escape in the event of a fire.

The temporary roofs were designed to be movable to save costs. They are designed to be built in 10 metre long sections and run along a triangular track on wheels. When in position the roof would be locked down to the supporting scaffold. The external access scaffolds and the temporary roofs are being erected in normal day time hours.

John Henry and his team of Kurt Peiper, Freddie Parchment and Steve Valentine are carrying out the scaffold erection and dismantling with Alan Abraham supplying the complex design drawings for the project. The works started in July and will continue through to next summer.

Our **vision** is to be the scaffolding contractor of choice to our customers and employer of choice to our people.

Eamonn Golledge—Contracts Manager
London Region

Our **mission** is to not only "Set the Standards" but to progressively and continuously raise them across all aspects of our business.

The Piccadilly Signs Big Power-On

The scaffold dismantle commenced on 18th September and was finally all dismantled and cleared by 13th October, ahead of programme. This was due to the efforts of Lenny Cheeseman and his team of Marvin O'Neil, Danny Bull, Alfie Mullins, John Docherty and George Gosgilvili. The main access scaffold was dismantled during the day with the gantry/protection scaffold dismantled at night. Sadly for a number of homeless people they have lost a roof over their heads at night.

The lights will be fully operational before the end of October with BBC's The One Show covering the event. The lights have been off since January this year.

The project, although not entirely complete has been a major success for all involved. We are still carrying on with works to the rear of the sign/building for Oakmont Construction.

On behalf of Benchmark Scaffolding I would like to thank Gary Dempster of EDS and his site team for making this one of the most enjoyable projects we have all worked on recently and are looking forward to the next one.

In addition to this the whole country are being asked to get involved and sponsor a colour. There are over 11 million individual LED pixel lights in a number of colours. All sponsors will be given details of where their individual light or lights are on the screen that they have sponsored. Barnardo's Childrens Charity will receive all the proceeds from this event. Google Piccadillyon to find out more. #piccadillyon.

Eamonn Golledge—Contracts Manager
London Region



Up to August this year we had achieved 17 months RIDDOR free working, and also notched up 1,200,000 hours without a reportable incident. Unfortunately this successful run has been halted because a scaffolder slipped and cracked a rib resulting in an over 7 day report.

We have accomplished a great achievement in the 17 months (the best in the company's history) however we must not become complacent. All of us can help to make this happen again and we should aim for a much longer time RIDDOR free or even forever, by managing the works correctly, following the RAMS, reporting near misses, talking to each other about the works and not taking short cuts.

We are accumulating a lot of Principle Contractors, individual and Company Safety Awards and also the number of incidents are reducing. This is demonstrating that all of us are working safer.

RIDDOR Free

June Safety Award

The monthly safety award goes to Danny Turner a COTS scaffolder at Tasman House, Wates contract, for working above and beyond his remit by being very helpful and working to the safety rules and impressing his site and contracts manager—he will receive £100 in vouchers.

Also Barnsley Market, Henry Boot contract, the scaffolders on site received commendation from the PC for the way the scaffolders perform, being very professional and helpful in their approach to the work—the Benchmark Team will receive £100 Vouchers.

Mount Anvil, Kidderpore Avenue, Benchmark came top of the safety league table for June and have been given a steak lunch each by MA for their efforts. The lads on site have been also been awarded £150 by BSL in vouchers for being top of the leader board for 2 months in a row.

We are pleased to announce that Hampstead Manor has been awarded 5 stars in the British Safety Council's 5 Star Health & Safety audit (the report findings will be circulated when the write-up is released to us). We now have the opportunity to apply for the prestigious Sword of Honour!

Thank you all for your hard work and dedication!

Regards, Tom Shield, Health & Safety Coach, Mount Anvil.

July Safety Award

The monthly safety award goes to Ricky Lovett, Wates, Tasman House for when returning from breakfast to complete a scaffold, he found someone working on it. He told the man to get off and an argument started. Ricky left the area and spoke to a Wates Site Manager who removed the man from the scaffold as he was working on an unsafe scaffold.

Mount Anvil, Hampstead Manor, have won the top of the leader safety board for 3 months in a row.

August Safety Award

The monthly safety award goes to Liam Barker, Keepmoat, Harrogate for winning the August monthly site safety award for being organised and helpful with Keepmoat and other trades and carrying out the works in a safe manner.

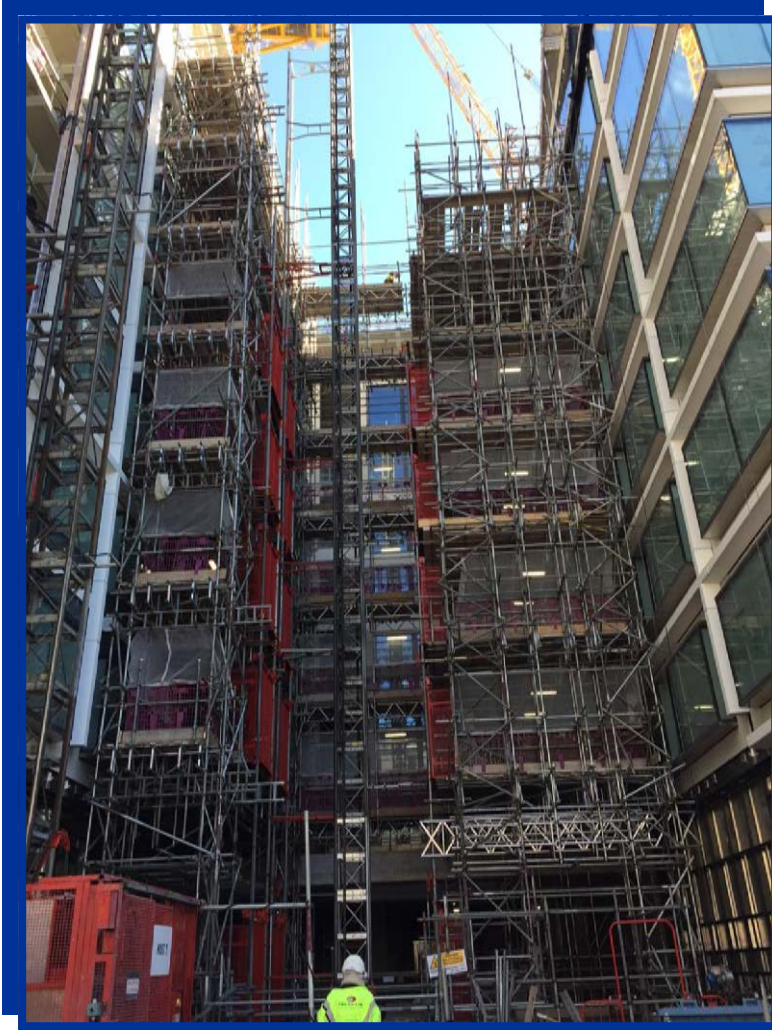
Mount Anvil, Hampstead Manor, have won the top of the leader safety board for 4 months in a row.

September Safety Award

The monthly safety award goes to Damion Moxon, ISG, Leeds Art College for obtaining the individual and the company monthly safety award for August also himself and the scaffolders onsite being recognised for working in a safe manner and the site paperwork being correct and up to date.

Tom Bird, Barratts, Sugar Quays won the monthly individual safety award for identifying an operative (not BSL) not working in a safe manner and taking control of the area making all work safely.

Sugar Quay



Below/Above is a very complex hoist run off scaffold for our good friends Barratt London, at Sugar Quay, Tower Hill.

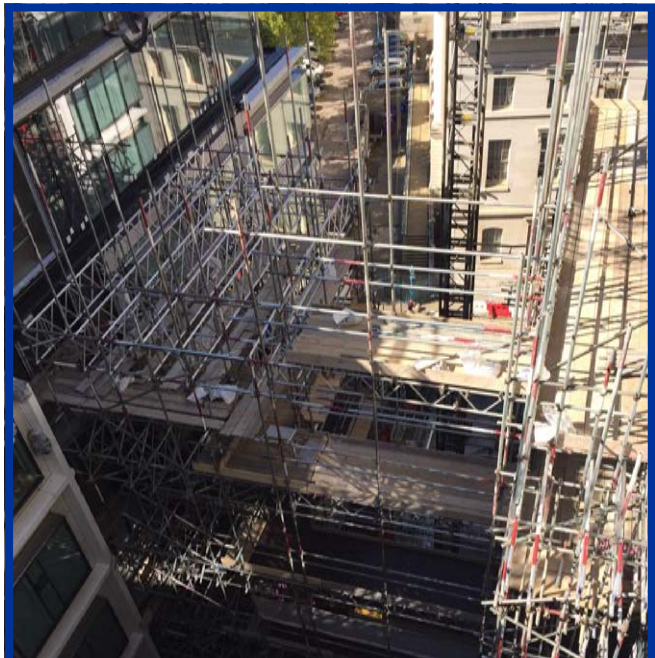
Complex in the context that every measurement had to be spot on to allow for bespoke elements to be delivered to one of three balconies at each landing, and then adding into the mix, there were only certain areas available for tie points so this was not an easy target for both the design and the scaffold teams to achieve.

Designed by Joe Laffar and an onsite team led by Perry Clifford were Tom Bird, Mat Tiborza, Wayne Didd, Alex Wright, with contributions by J Brooks, D King, R Calvert, P Smith, A Surd, A Ferris, JP Donnaugh, D Ball (sorry if I forgot any one).

This was a beam lovers paradise, with approximately 51 x 6m and 48 x 2m hex beams and 55 x 450 8m, 55 x 450 6m and 18 x 450 4m alloy beams as well as 77 x 2.5m steel ladder beams, there was plenty to get confused about.

Due for completion (waiting for windows above to be installed) for the end of the month /start of next month, this is a job that all involved can be extremely proud of.

Ojay Roynon—Contracts Supervisor
London Region



Mount Anvil

Hampstead Manor Kidderpore Avenue

Mount Anvil, Hampstead Manor Kidderpore Avenue Benchmark came top of the safety league table for June and all the Benchmark operatives have been given a steak lunch by Mount Anvil for their efforts.



The lads on site have been also been awarded £150 by BSL in vouchers for being top of the leader board for May & June. The photo below is showing Peter Booth thanking Dave Harding and the team. Our team on site, comprising a mix of 6 men on loan from the Barnsley branch and the rest London boys, went on to top the safety leader board in July, August & September. A great example of how successful our northern and southern scaffolders can be when they work together. During recent months loan men from Barnsley have also helped their London colleagues at Larkhill Barracks, Excel-Western Gateway and Charter House for Otis in Watford.

The following email was received by the contractors on site sent by Mount Anvil.

We are pleased to announce that Hampstead Manor has been awarded 5 stars in the British Safety Council's 5 Star Health & Safety audit (the report findings will be circulated when the write-up is released to us). We now have the opportunity to apply for the prestigious Sword of Honour!

Thank you all for your hard work and dedication!

Regards, Tom Shield, Health & Safety Coach, Mount Anvil



Noticeboard displayed by Mount Anvil on site demonstrating our roof system.



A roof section being lifted by the site crane.



This is the Chapel Building ready to receive the roof section. These sections will be lifted off the temporary roof shown above and moved on to this scaffold. Good planning by Mount Anvil and Benchmark, saving time on the project and lowering safety risks.

Peter Booth—Company Safety Manager



Farewell & Good Luck



Here are some photos from the Leaving Buffet Lunch in the Benchmark Bistro for Florence, Vicky and Graham who have banked 60 years of service to the company between them.



Graham Laffar opted for a Company funded leaving drink (instead of a leaving present), at a pub on site at Westfield White City

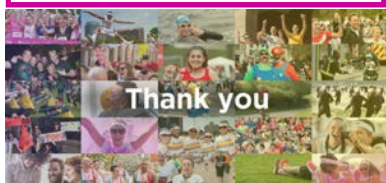


Graham has a retirement drink with some old colleagues (well Hitesh is not quite as old as the rest of them).

If you've recently had a new addition to your family,
or have a birthday coming up
send us a photo to the Barnsley office
and we'll make sure we show them in the next edition.
Or you could email us:

barnsley@benchmarkscaffolding.com

Again we were recognised
in the top 1% of donors for
the month of June on the
just giving website.



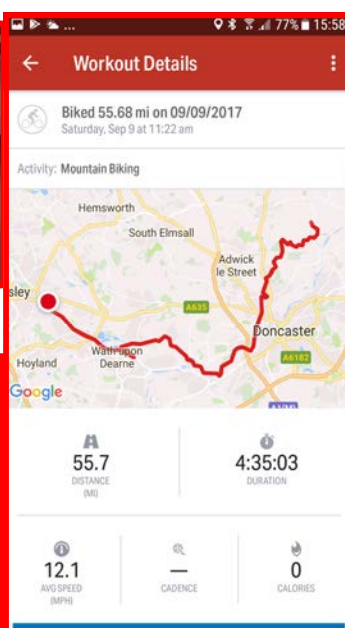
Rob, you were in the top 1% of
donors for June



Rob West with Bill Hill,
Chief Executive of the
Lighthouse Club Charity, at
a fundraising event in the
Summer. Bill was very
pleased to hear that we had
distributed his helpline
cards to every one of our
employees and that we had
given them a mention in our
previous Benchpress.



Cain Eggleston, Director & General manager Northern Region, is seen here presenting a cheque for £677 to the Sheffield Children's Hospital Charity. He was determined not to be outdone by Team Benchmark, comprised mainly of Southern softies, on the London to Brighton trip, who only cycled 54 miles - Cain beat that and clocked 55.7 miles in four and a half hours to raise this fine total singlehandedly.



Team Benchmark celebrate on Brighton Beach

Contact Numbers & Offices

West London Office

Waterside Trading Centre, Trumpers Way, Hanwell, London W7 2QD
Tel: 020 8867 9977 Fax: 020 8867 9900
Email: info@benchmarkscaffolding.com

Northern Region Office

Max Darby House, Valley Road, Station Road Industrial Estate, Wombwell, Barnsley, S73 0BS
Tel: 01226 755 922 Fax: 01226 755 166
Email: barnsley@benchmarkscaffolding.com

BENCHMARK SCAFFOLDING



Setting the Standards