

BENCHPRESS

One For The Ladies



You know, I've been re-reading some of the past issues of our newsletter and I've been very impressed with some of the articles extolling the excellent virtues of our company, reinforcing the "can do" culture, and highlighting the quality of our workmanship. Most of this justifiable praise is in respect of our front end stuff, and it struck me that no-one has yet gone into print about the back room boys, or, more to the point, and my reason for wanting to write this article, is the back room ladies. Yes, scaffolding can well be described as a macho industry, but as we all know, behind every good man there is, well, usually, a good woman, maybe not necessarily in the marital sense but in our case, in the business support sense.

We have in fact eight ladies in our company who all carry out vital and necessary duties without which the company would not be able to function in the efficient and successful way it does. Don't worry ladies, I have decided not to adorn the newsletter with your photographs, although judging by the last few entries it would without doubt be a vast improvement! In fact I'm thinking now, how about a charity calendar with some seductive shots cleverly concealed behind some scaffolding – but then that sort of thing has already been done and, anyway, we are four ladies short of a full calendar, so perhaps not (yet). But seriously, as those of us in the company already know, we have a very hard working and dedicated staff of ladies who all have their own very special qualities which we rely on and which help to keep the wheels of our business turning freely.

The cast in branch/alphabetical order is as follows: Georgina Bradbury, Office Manager Barnsley and co-ordinator of the Benchpress newsletter. Amongst her many other office functions Georgina also provides administrative and planning support to Peter Spencer for the works at Yorkshire Water. Lottie Creaser, works part time as receptionist and assistant to Georgina; these two ladies definitely keep a firm hand on the activities of the Barnsley branch and it can be no easy job keeping a check on the big fellows up there! In Hanwell we have Florence McDermott, Payroll Manager and definitely the scaffolders' friend, especially on a Friday! Florence also deals with personnel issues, (that's personnel, not personal!) and has the honour of being the longest serving lady in our company – and one of the youngest too! Jane McEwan is Commercial Assistant and part-time Health and Safety assistant to Peter Booth. Jane is an integral part of the commercial team providing support in the preparation of valuations and chasing cash – crucial in the current economic climate. As you know, Peter and Jane are partners in real life as well but this doesn't seem to prevent them from working well together within the business arena! Keira Bhatti, the gateway to the Hanwell branch, is Receptionist, Administrator and Organiser-in-Chief of the operations department – apparently an impossible task, but somehow she manages to achieve it, and with gusto too! Keira also gets involved with organising, distributing and monitoring the issue of company clothing; a considerable task and handled in a way that would put a small clothing outlet to shame! Mary Dolan, Senior Accounts Assistant, has the unenviable task of being responsible for the purchase ledger and dealing with the never ending request from suppliers to help them out with their cash flow – which of course Mary is always happy to oblige! Alongside Mary in accounts is Taiwo Illembola, Senior Accounts Assistant and everybody's friend, not least of all because she looks after the petty cash (i.e., she pays out expenses!) and our lottery syndicate. Oh and she also looks after the sales ledger. And finally in Hanwell we have Vicky Hunt-Poore, PA to Rob West. Well someone had to do it! As well as organising his work calendar (and be honest, would you really want that job?), she looks after the purchase order register (almost a full-time job in itself), updates the company web site, and co-ordinates and organises the various functions that we like to share with our friends, usually involving a small ball and some sticks. She also does many other clever things that completely baffle me but I just pretend to understand!

Whilst mentioning the ladies in our company it would be remiss (and possibly fatal!) of me not to mention of course all the other ladies; yes, I mean the ones at home, the ones that put an arm round our shoulders and sooth away the cares of the day when we finally get home.

Quite simply, where would we be without them? Answers on a postcard.....

The most obvious thing we all know is that they carry out their roles with a smile and most importantly with a good sense of humour which undeniably helps us all to cope with the stresses and time constraints of a busy, successful business. It's been said before and I won't apologise for saying it again – it's all part of the Benchmark culture. On behalf of all the men in the company then, I would like to say a big thank you to all the ladies, you are really appreciated, and please keep up the good work.

So, guys, next time you think you are the backbone of the company, you're really only the arms and legs! And remember ladies when your partner comes home late from work don't believe him when he tells you he's been in the pub for a well earned pint after a hard day's work, it's because he's been in an important strategy meeting that just ran on and on!

Keith Slight
Commercial Director

Contact Numbers & Offices

West London Office
Waterside Trading Centre
Trumpers Way
Hanwell
London
W7 2QD

Tel: 020 8867 9977

Fax: 020 8867 9900

Email: info@benchmarkscaffolding.com

Northern Region Office
Max Darby House
Valley Road
Station Road Industrial Estate
Wombwell, Barnsley
S73 0BS

Tel: 01226 755 922

Fax: 01226 755 166

Email: barnsley@benchmarkscaffolding.com

East London Office
1b, Whittings Way
London Industrial Park
Beckton, London
E6 6LR

Tel: 020 7474 5346

Fax: 020 7511 6014

Email: beckton@benchmarkscaffolding.com
www.benchmarkscaffolding.com



**Life saver: Bypass bridge hero
Dale Benson—Scaffolder
Northern Region**

“Reproduced with kind permission of
Barnsley Chronicle”

Dale saves man who threatened to jump

A SCAFFOLDER has told of the day he helped rescue a man who was threatening to jump off a footbridge on Westway.

Dale Benson, 27, and two police officers dragged the unnamed man from the edge of the bridge.

He said: “I am not a hero. I just did not want to witness a man jumping to his death.”

“The man was with a woman who was shouting ‘no’.

He was trying to jump off.

She was trying to hold him, I grabbed him and then the police got hold of him.”

The officers, PC Steph Coverley and PC Wayne Snowden, pulled him to safety and he was later taken to the Oakwell Centre mental health unit.

Dale said the drama started on Westway when he was travel-

ling with pals to a pool match.

“We saw police cars with flashing lights and at first I thought we were being pulled in. That’s when I saw the man on the bridge.”

“He was with a woman who was shouting and then I saw him climb over the railings onto the edge.”

“I ran up a walkway to the footbridge on Pitt Street, followed by another passenger, Dave Thornton.”

“The police must have taken another route because they were just behind me when I arrived at the scene.”

After the incident, Dale, of Kingsway, Wombwell, Barnsley who is a member of the Darfield WMC team, went to The Engineers at Higham where he lost his game.

Happy Birthday Mark

From this

A highly respected Foreman with the company, Mark Thompson, celebrated his 60th birthday on 13th October. He joined us in 2004, having previously worked for Georgian Scaffolding in their Media Events division



To this

and then Anglewest Scaffolding. Previous projects of note, where Mark has served the company well, were Bankside and the City’s Guildhall.

In 1949, Mark (or Mordecai, as he is affectionately known to close relatives) was born on the Silver wedding anniversary of his maternal grandparents who, being of Jewish stock, arrived in England in the mid 30’s from Austria. The emergence of the Third Reich forced them to flee from persecution, leaving behind their home and bakery business.

30 years ago, Mark married Pat and they recently re-took their vows in a synagogue during a holiday in Israel. They have a son, David who also works in the scaffolding industry.

Mark’s overriding interest, when he’s not at work on the Olympic Athletes’ Village development, is following the ups and downs of Formula 1.

Graham Pope—General Manager

In 59 years!



Our vision is to be the scaffolding contractor of choice to our customers and employer of choice to our people.

Our mission is to not only “Set the Standards” but to progressively and continuously raise them across all aspects of our business.

Stratford City Redevelopment

Congratulations on winning the Westfield bid

My congratulations go to the following people for all their hard work and effort so far.

- Rob West** for demonstrating very tough negotiation skills.
- John Walton & Gavin Mackay** for preparing a very competitive bid.
- Barry Baker & Graham Laffar** for skilful accounting.
- Bernie McDermott & Dennis Rigg** for banging on doors until they opened.
- Mark Byrne** for co-ordinating with the local councils.
- Alan Abraham** for delivering complicated design so promptly.
- Ian Paxton** for setting and exceeding the standard.
- Renzo Pezzolato** and his team for a first class supply.

Most importantly all the operatives that have enhanced our reputation at Westfield by their excellent hard work.

To all of those not mentioned working behind the scenes a very big thank you.

Now the hard work begins. Winning the bid was very difficult, but now the hard part begins. We now have to turn this contract into a profitable job. I am sure that by demonstrating our many skills, that we have the right personnel in position to deliver Gold.

Les Dryden—Contracts Manager
London Region

BENCHMARK SCAFFOLDING LTD



Setting the Standards

Waterside Trading Centre, Trumpers Way, Hanwell, London, W7 2QD
Tel: 020 8867 9977 Fax: 020 8867 9900 Email: info@benchmarkscaffolding.com

4th September 2009

To: - All Operational Staff

TG20:08 /EN12811-1 – WORKING REQUIREMENT UPDATE BASIC SCAFFOLDS. ISSUE 1

September 2009

1. Scaffold Ties:-

Basic Scaffolds should be tied every other lift (4.0m) and every other bay which means for 1.8m upright spacing ties will be 3.6m centres, 2.0 centres of uprights would be 4.0m tie centres and so on up to 2.7m bay which will allow 5.4m tie spacing.

Sheeted or Netted scaffolds must always be tied at the top lift level.

Unbraced pavement lifts up to 2.7m max must be tied in accordance with section 6.2.2 of TG20:08 and this is attached for information.

Netted and Sheeted scaffolds must be 2 fitting value and unsheeted scaffolds must be 1 fitting value.

Fischer type ties are not to be used under any circumstances,

Reveal ties are subject to design approval and may only be used for up to 50% of the total when the scaffold is not sheeted or netted.

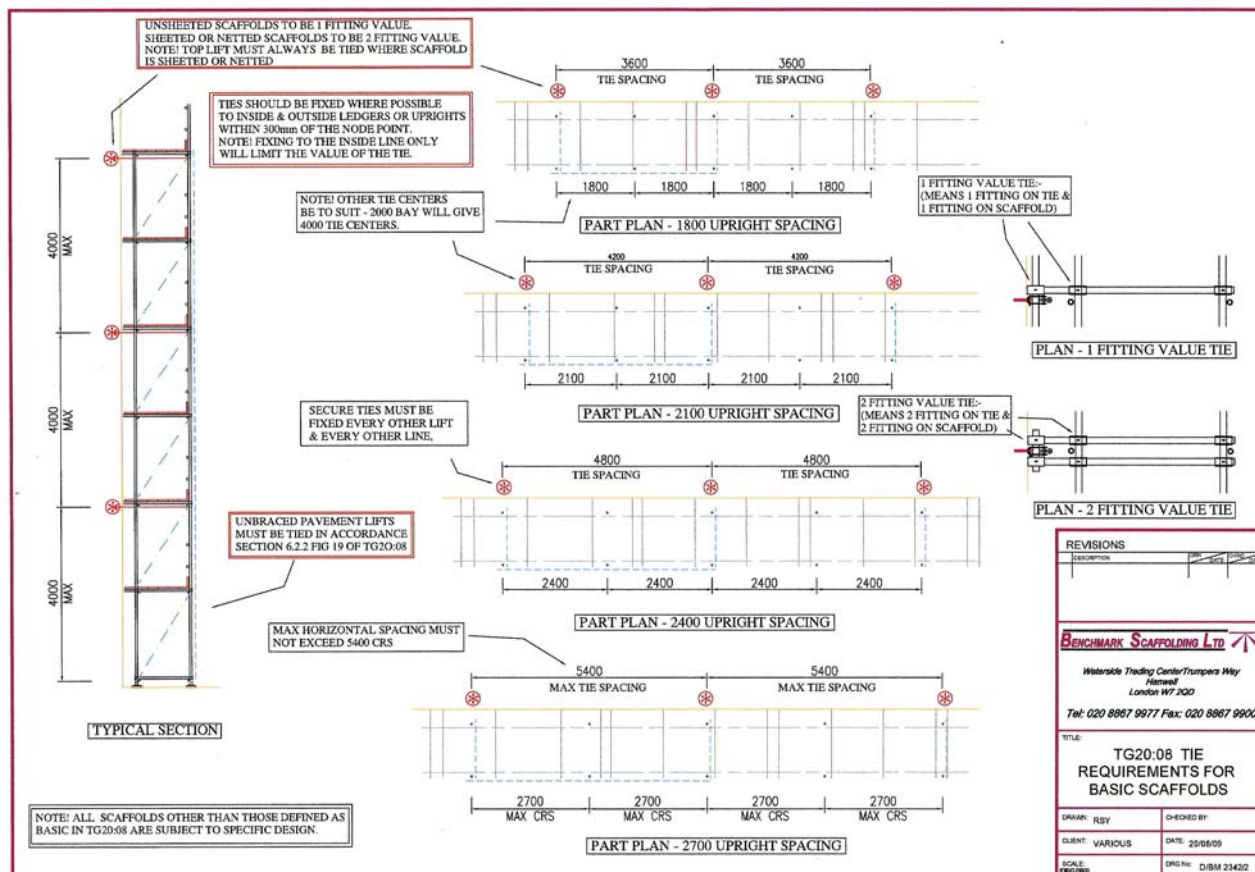
It should also be noted that it is not permissible to sheet or net systems such as Haki unless they are tied at every node point or specifically designed.

(See D/BM 2342/2 for Further Tie information).

If anyone does need any further information please do not hesitate to contact Technical services or your Contracts Manager.

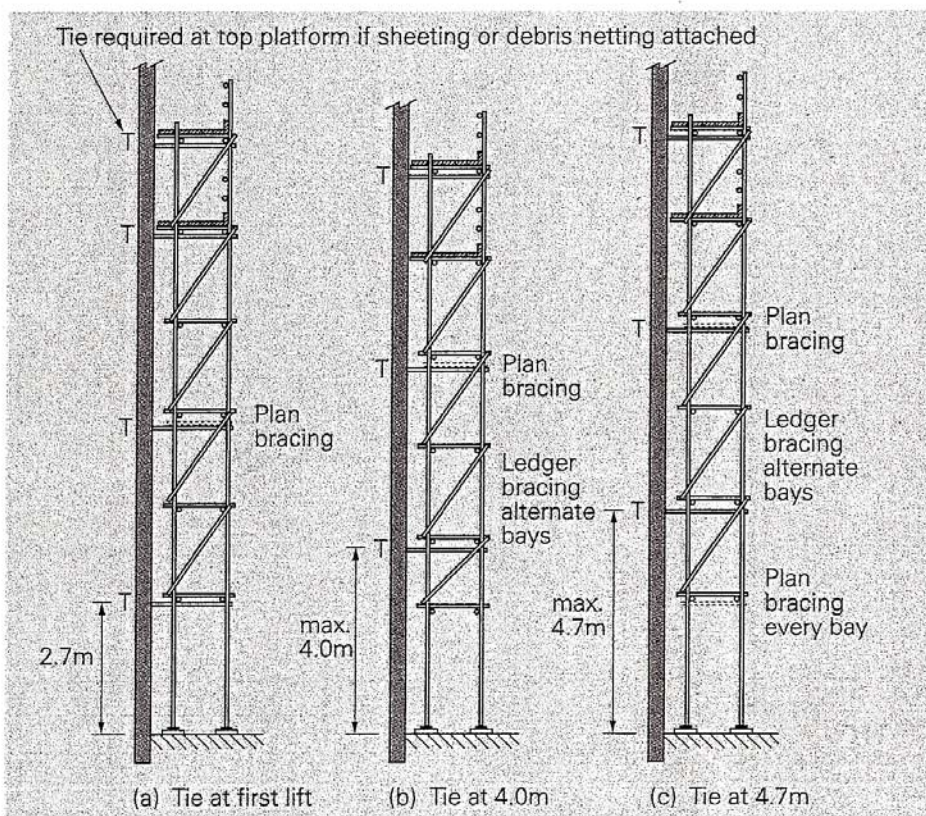
Regards

Bob Young.
Technical Director.



6.2.2 Pavement Lifts

Where ledger bracing is omitted from the bottom lift, such as in a pavement scaffold up to 2.7m, the scaffold must either be tied at the top of the bottom lift (see Figure 19(a)) or stabilised by other means, such as outside rakers. Refer to Clause 5.7.3.



Notes

- 1 Pavement scaffold first lift of 2.7m as described in Clause 6.2.2.
- 2 Facade bracing is fitted to the outside of the scaffold and extends to the ground level.
- 3 Ledger bracing is fitted to alternate pairs of standards above the pavement lift. Removal of ledger bracing as stated in Clause 41.2 is not permitted below the second tie position.
- 4 Scaffold loaded as Table 1 (page 21) for class considered.
- 5 When the scaffold is sheeted or has debris netting, a tie is required at the top platform.
- 6 Where the first tie level is between 4m and 4.7m above the base, plan bracing is required in every bay as shown in (c) above.
- 7 For scaffolds with lines of ties at every lift, the arrangement at (b) is not permitted.

Figure 19 - Arrangements of pavement lift

For scaffolds with lines of ties at alternative lifts when neither of these solutions is practicable, the further alternatives shown in Figure 19(b) and (c) may be utilized.

PALACE OF WESTMINSTER

Over the summer recess Benchmark Scaffolding have completed the second stage of the project to refurbish the roofs over the House of Commons for Allenbuild Ltd. The scheme involves building temporary roofs over the listed buildings to give full weather protection so the cast iron tiles and gutters can be removed, taken off site to be refurbished and then finally replaced in their original locations.

The scaffolding structure has been designed using a 750 Hakitec panel roof supported on a 2.5m wide cross braced scaffold on either side of the building that is only allowed to butt the existing walls.

In addition to the normal wind and snow loads the roof has been designed to support lifting rails that will allow the cast iron members to be raised and moved under the roof beams by means of a pulley system to one end. At this point they are lowered onto

trolleys onto a slung platform which gives direct access into the hoist. The cast iron tiles weigh up to 200kg and the gutter sections up to 450kg.

The specialised roof is covered with Filon sheet panels and the side scaffolds are covered using monarflex airflow sheeting.

The structural engineer for the project is The Morton Partnership.

This structure has been erected to a very tight programme in a very sensitive location by our operatives and is built to the highest standard.

With special thanks to;

Russell Greenbrook,
Daren Redgrave,
Danny McCarthy,
Dave Humphries,
Micky Fish,
Dave Hasting,
Dave Crawford,
Tommy Venables Jnr,
Paul Kench and
Adam Slack.

**Bob Young-Technical Director
London Region**



STOWE SCHOOL PHASE 3



During the summer holidays Benchmark Scaffolding has constructed a temporary roof over the East Pavilion and Library buildings at Stowe school for Linford-Bridgeman, the repair and restoration arm of the Linford Group. The contract follows on from the stage 2 structure we constructed back in 2003 over the main building.

The roof again has been constructed using the updated Hakitec 750 panel roof with a lifting facility built into the design. Like the previous contract the main support scaffold on the south elevation is untied and buttressed to resist the wind forces.

The rear scaffold had to be set out over a non load bearing flat roof and this has been supported using a box beam constructed from 8no 750 haki beams, this spans between the return and central buttress walls whilst supporting all lateral and vertical forces.

The structural engineer for the project is The Morton Partnership.

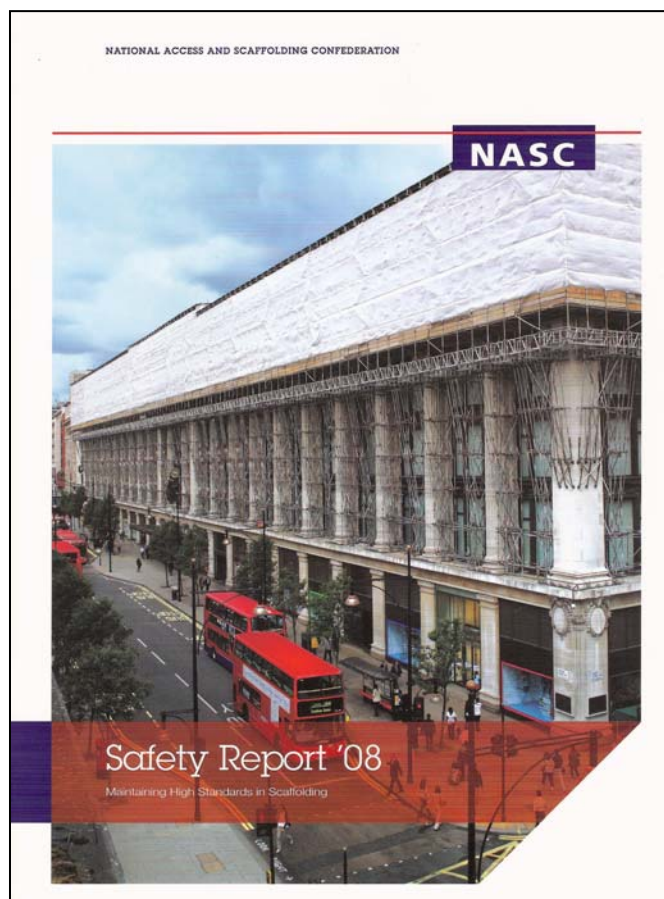
This structure has also been erected on programme in a very sensitive location by our operatives and again is built to the highest standards.

With special thanks to the Cobra Squad, they are as follows:

Barry Lane, Gary Hagger, Lee Jones, Graham Parker, John Venables, Mick Merriman, Danny Eden, Lee Batty, Joe Batty, Ray Eden, Ceslovas Andriuskevicius and Jason Smart.

Bob Young—Technical Director
London Region

NASC Safety Report 2008



After much disappointment that we did not achieve the front page of the 2009 NASC Year Book with our stunning photographs of the prestigious Selfridges project, we are now pleased to announce that we have been selected for the front page of the 2008 NASC Safety Report.

**Victoria Hunt-Poore—PA to Rob West, Managing Director
London Region**



The four musketeers—left to right
Keith Lawson, Ian Hardisty, Billy Wood & Peter Spencer

THE GOLDEN HANDSHAKE

*Ian Hardisty retires after
six years service with*

Benchmark

SAFETY AWARDS

June

Gary Roberts won the Northern award. When the incinerator in the yard was moved to a more suitable area, Gary discovered the incinerator was too close to the fence and that the heat could be felt on the public path. He erected some CI sheets on the fence to protect the public.

Alan Pomeroy won the London award for discovering that others had removed scaffold components from 2 bridged scaffolds and had broken out sections of the supporting floor. Alan cleared the scaffolds of operatives and informed his manager and the Principal Contractor.

July

Mark Hazlehurst (Barnsley, Yorkshire Water Works) & Tony Meacock (London, Kingston Regatta) won the Northern & London awards for their attention to safety when working in potentially very hazardous areas and carrying out strict measures preventing bio-hazards, and particularly Mark for his dedication even when he is in the "muck", literally! Tony has been doing the Regatta nearly every year since the company was formed and we always get a letter of commendation from the organisers.

Congratulations to both.

August

Jonathan Wilkins and his team won the Northern award on the **NUSA** site (Carillion) for having erected perfect scaffolds (or as near as!!) on site, and for all-round attention to detail and maximum effort when working on scaffolds.

Desmond Wright (Beckton Driver) won the London award for erecting a handrail around his lorry (from a safe position) before the scaffolders unloaded the lorry. His actions were noted and commented on by a member of the contractors safety team.



From left to right Kevin Travis, John Freeman (hiding), Neil Orwin, Matthew Wilkinson, Jamie Dixon, Colin Foley — Front Sean Bell (Carillion Site Manager) and Jonathan Wilkins.

CARILLION
NUSA SITE
CARILLION
NOTTINGHAM

PUZZLE TIME

Dingbats Quiz

Can you solve the phases below

THEIR THEIR	SIOUTDE	BL@USE	AID ← AID AID
LOOK	ISSUES ISSUES ISSUES ISSUES ISSUES ISSUES ISSUES	LU CKY	AMUUS
NOWDEEPHERE	DAYAT	<u>1, 17, 39</u> whelming	TR@USERS

Aqua-scaffs



Meet Tony Meacock & Steve Savill, they have spent at least 4 days nearly every year since the company was formed up to their necks in the River Thames. Why? The

structure they are erecting is a pontoon for the Kingston Regatta. It is nearly 45m long and is based 1.5m under water.

As you can see by the expressions on their faces they are so happy to be splashing around in the water. When asked why they do this every year, they said there's nothing fishy going on we're just slightly quackers.



Peter Booth—Company Safety Manager

Hybrid Cars

Benchmark has recently added some Honda Civic Hybrid cars to its fleet. With some amazing features and performance to its credibility, it is one of the greenest dual fuel cars on the road and is, in my opinion, one of the smartest looking.

The Civic Hybrid is equipped with an "idle-stop" feature that temporarily turns off the engine to save fuel and minimize emissions. A green auto-stop light on the instrument display flashes to indicate when the idle-stop feature is operating. As the Hybrid comes to a stop, the idle-stop occurs automatically. Engine restarting occurs automatically, as soon as the brake pedal is released.

Honda's Integrated Motor Assist, IMA, couples a 1.3-litre, 8-valve, i-VTEC 4-cylinder petrol engine with an electric motor. Although the engine alone provides sufficient driving performance, when additional power is required, a permanent-magnet electric motor mounted between the engine and transmission provides power assist. The electric motor can propel the car from a stop to speeds up to 35mph. Together, the motor and engine produce 115bhp @ 6000rpm.

Every Civic Hybrid is equipped with a continuously variable transmission (CVT). Similar to an automatic transmission, CVT is an advanced transmission that substitutes the gears found in more traditional transmissions and replaces them with a metal push-belt running between a pair of variable-width pulleys.

Honda CVTs provide better fuel economy and acceleration when compared to a conventional transmission.

So if you are thinking of getting a new car soon, I can recommend going green. As you can see with its impressive features and new technology it is the future, oh and the £15 a year road tax is a good enough incentive in itself.

**Billy Wood—Northern Region
Health, Safety & Environmental Advisor**



BENCHMARK SCAFFOLDING LTD



TG 20:08 - GUIDE TO THE USE OF EN12811-1.

TECHNICAL UPDATE.

6th July 2009

In January this year TG20:08 was published & Benchmark Scaffolding Ltd is committed to being fully compliant with this document by the end of 2010, in accordance with the recommendations of the HSE & the NASC.

TG20:08 is the Technical guidance to BS EN 12811-1 & generally complies with this document, the only major difference is that the requirement to allow the removal of ledger bracing has been removed.

Please note that under no circumstances can ledger bracing be removed even on a temporary basis, unless a specific design has been carried out.

We will now be issuing a set of basic rules to ease us into the new standards & these will be updated every few months until we have included all the relevant changes that will make us compliant by the end of the next year. We have already followed the recommendations from 2007 with regard to the new Tie / Face bracing rules & the new list will start with extended definitions for these 2 points.

Best Regards,

Bob Young.

Technical Director.

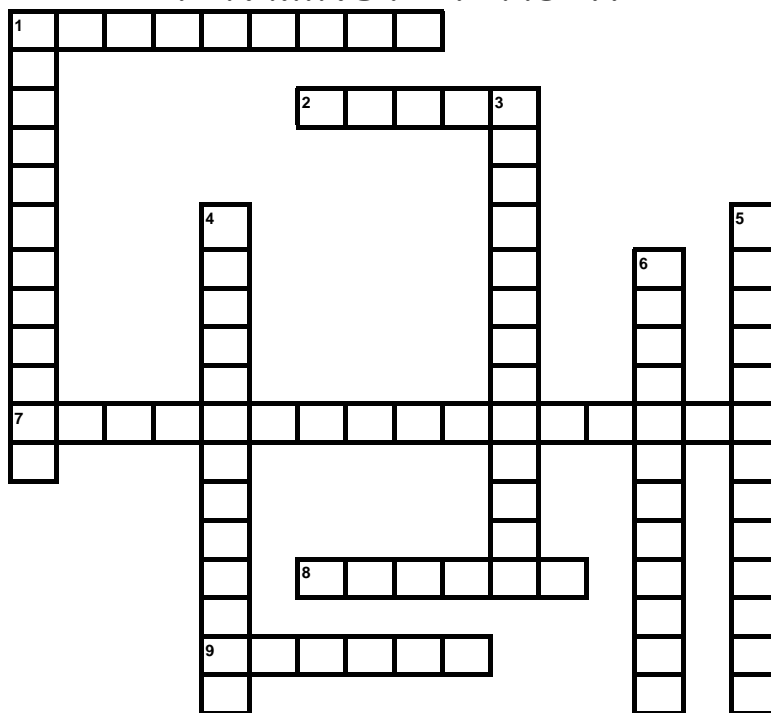
For information:-

EN12811 is a European code which has the status of a British Standard & this will replace BS5973:1993. (BS 5973 is the British code that we have worked to for at least the past 30 years)

TG20:08 (Volumes 1 & 2) is the Technical Guidance on the use of BS EN 12811-1

If you've recently had a new addition to your family,
or a birthday coming up
send us a photo to the Barnsley office
and we'll make sure we show them in the next edition
or you could email us
barnsley@benchmarkscaffolding.com

TEN MINUTE TEASER



ACROSS

- 1 Benchmarks first customer
- 2 How many black 4 by 4 vans
do Benchmark have
- 7 Miller Lite
- 8 We share their colours
- 9 What borough is Hanwell in

DOWN

- 1 Used in Bristol
- 3 Oh no not again
- 4 Nelson needed
- 5 They're handy
- 6 What building is on the
front of our brochure

PROFILE Benchmark

Name: Russell Greenbrook
Position: Contracts Manager
 Palace of Westminster
Favourite Band: YES
Likes: Golf
 Chelsea Football Club
Dislikes: Taxman
Dream Car: Aston Martin



Jonathan Wilkins is the proud
father of Edie Bliss born
23.07.09 weighing 6lb 9oz
Northern Region



Keith Lawson with 3 weeks old
granddaughter Amelia-Louise born
25.08.09 weighing 8lb 1oz
Northern Region

BENCHMARK SCAFFOLDING LTD



Setting the Standards