

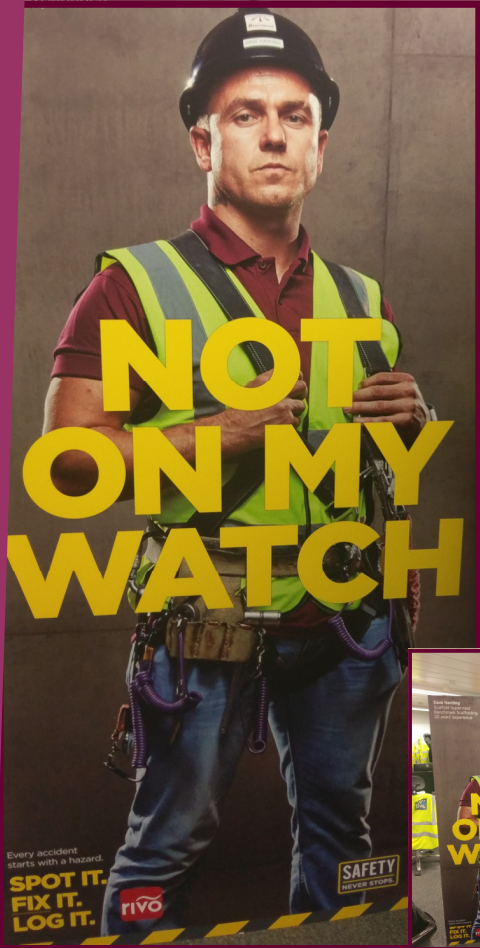
# BENCHPRESS

By the time you are reading this edition of Benchpress the clocks will have gone forward an hour and spring will, hopefully, be well and truly underway with the snow and ice a distant memory. Those freezing conditions really don't help us scaffolders so we are happy to look forward to the next six or eight months of better weather ahead. Front page bragging rights this time go to Dave Harding who is our Project Manager at Kidderpore Avenue; which is a major project we have for Mount Anvil in Hampstead, London. Dave was selected to feature in a life size photo safety poster encouraging people to spot it, fix it, and log it, with the NOT ON MY WATCH slogan across the front. I am convinced that he was selected for this honour due to Benchmark's record of topping the monthly safety league table more times than anyone else including a run of 5 or 6 months on the trot. Well done Dave and all our team down at Hampstead.

The second photo features Steve Crompton and Kevin French. Steve has established our Hoist Division as a highly regarded and respected supplier of top quality hoists (Alimak only) in the London market. After nearly 10 years with us Steve was considering retirement but we have agreed a compromise whereby Benchmark, and therefore our customers, can continue to benefit from Steve's vast experience and knowledge and he in turn can achieve a better work/life balance. To that end Steve will work part time on Tuesdays, Wednesday, and Thursdays from April onwards and Kevin, who joined us last summer and is already our Hoist Division Manager, will take the reins when Steve is doing his gardening or fishing or whatever one does when semi-retired. With this new arrangement I have calculated that Steve should be good for about another 25 years!

A quick round up of other news follows:

Our order book is at an all-time high with enough work already secured to exceed last year's record turnover figure. We did feel a little pain from the demise of our long time trading partner, Carillion, when they went into liquidation in January. Ironically not many scaffolding companies were directly affected by this situation as only a handful of companies qualified for their stringent Category A preferred list and those chosen shared virtually all their work. At one stage we calculated that we were exposed to a loss of nearly half a million pounds but the final bad debt figure looks like being well below £100,000 now, which certainly hurts, however we should also remember all the tens of millions of pounds worth of work we received from them in the decade or so before their collapse.



Our Northern Region has now returned to profit for January, February and March and are looking strong now for the rest of the year having now fully recovered from the effect of losing the Yorkshire Water contract last year.

Bob, our Technical Director, is setting up another charity cycle event in September (see page 4).

We still await our two brand new Scania lorries which are now in the county but are having their cranes fitted before being stickered up ready for a photo call for the Summer Benchpress.

Oh yes... and I became a granddad for the first time earlier this month! (See back page for details)

Stay Safe,

Regards, Rob West – Managing Director



## BENCHMARK SCAFFOLDING



*Setting the Standards*

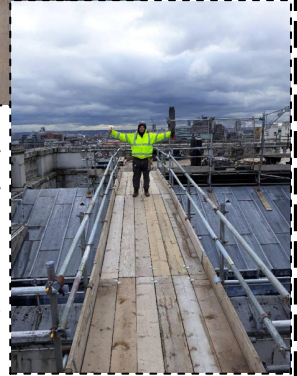
Issue 34  
Spring 2018

# Mission Impossible 6 Tom Cruise

This was erected on the lower roof of St Pauls cathedral, we

had to erect a small launch platform for Tom to start his shoot from where he is chased across the roof of St Pauls, he then slides down the roof onto a boarded walkway in the gully.

He then runs across our beamed walkway onto our beamed working deck of 6m long x 10m wide, this was made to look like a construction site for lead workers, we provided two hoist arms and a hoist gate for props. He is then filmed jumping over the



stone balustrade onto a load suspended on a crane.

The scaffolders involved with the erection of this were:-

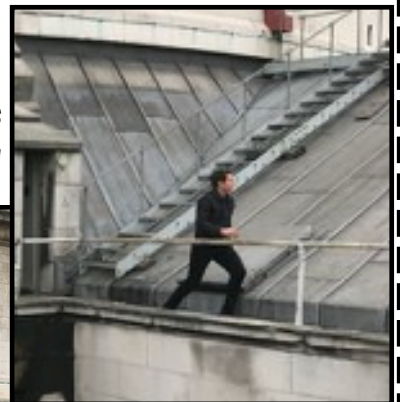
1. Robert Calvert
2. Paul Smith
3. John Docherty
4. Micky Edwards
5. Finn Eddy

We had to adapt the platforms several times to suit the ever changing demands of the film company and stunts. The weather was also not the best with it raining most days.

The film company was very pleased with our operatives positive attitude and professionalism in erecting the access scaffolds and would be eager to use us again. The director was also very interested in using Rob and Paul for his new film "Laurel and Hardy" still waiting for more news to follow from this.

The last two pics show tom cruise in the background during the chase scene.

Barry Lane—Operations Manager  
London Region



Our **mission** is to not only "Set the Standards" but to progressively and continuously raise them across all aspects of our business.

Our **vision** is to be the scaffolding contractor of choice to our customers and employer of choice to our people.





HENRY BROTHERS

# Hangar One RAF Waddington.

Benchmark Scaffolding (Northern Region) have been favoured, by Henry Brothers, to provide part bridged and part suspended scaffolds within both halves of a 1930's aircraft hangar at RAF Waddington near Lincoln. A sort of "hanger in a hangar".

One half of the building is a garage housing many and various airside type vehicles whilst the other half is home to flight training services and flight simulators.

Both halves present us with challenges peculiar to the respective uses. As usual Benchmark's revered design department have produced the best solution and designed out excess materials to help the job be built in the most expedient fashion in terms of manual handling and safety.

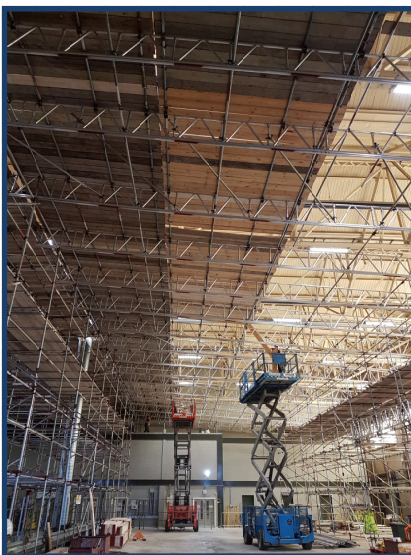
In the garage side our team have built three wide independent scaffolds and then joined them at high level with proprietary beams sloping to form an apex. The deck over the beams comprises a layer of scaffold boards all fixed down using our very own Laffar couplers. Over the boards goes a heavy duty plastic membrane which allows water to flow from the apex down to the building side where we have constructed troughs into which the membrane is shaped to create a gutter.

Once complete the scaffold will allow vehicles to be re-admitted to the garage.

OK, so that's the easy bit!

This is a hangar of two halves and the other side is a whole different ball game. Here we encountered internal semi-permanent cabin style offices and several extremely valuable flight simulators. The scaffold in this area had to be built such that, once completely erected, staff could go safely about their duties and resume the training courses that were scheduled.

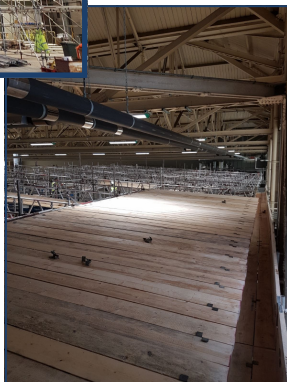
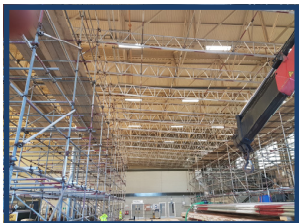
Sectional completion of the scaffold will permit the contractor to remove the existing roof and replace it with a nice new one.



Externally we have erected four loading bays each with an attached Haki type stair tower. Roof edge protection is also required as the parapets are too low to allow personnel to work up there safely.

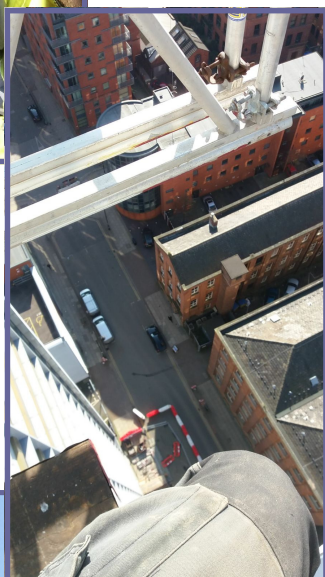
We have resourced this job with a first class crew of around 13 scaffolders who have handled 5000 scaffold boards and 300 beams, oh, and a few tubes & fittings too!

**Paul Taylor—Estimating Director  
Northern Region**





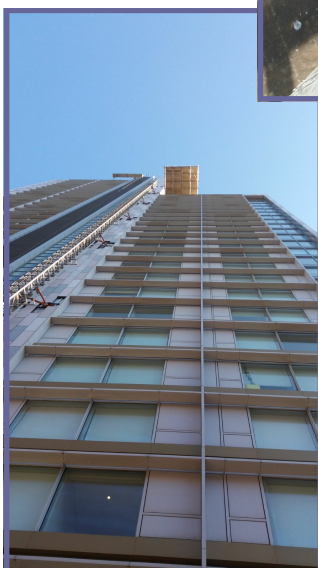
# Liberty Heights Manchester



We have recently secured and undertaken works for Clear Line on Liberty Heights tower block in Manchester where recladding works are being undertaken. This continues on from our recent venture with Clear Line during the refurbishment of Meadowhall Shopping Centre where we worked successfully together delivering a quality service in some challenging environments. During our time working with Clear Line we have built up a reputation as a quality scaffold provider with an understanding of our customers' needs and high standards which made us their scaffolder of choice when it came to such a complex and high risk project. The scaffolds are for loading out with cladding for both the removal and installation phases and for the access to the cradles which will be used during the works. We also had to incorporate continued pedestrian access at the ground level and provide a stair access to the higher levels where the cradles could not reach.

I would like to say a big thank you to the lads who worked on the high level canterlever at 75m level and the work on the lower scaffolding from ground to 5th floor level— Matthew Wilkinson, Neil Orwin, Dean Norton, Steve Smith, Brennan Leggitt and Grant Lawson plus a big thanks to Joe Laffar and Mark Kntiter for their input to the job.

Keith Lawson—Senior Site Supervisor  
Northern Region



## The Next Challenge



Following the success of last year's *London to Brighton* bike ride I am planning to enter a team into this year's *Thames Bridges* event which takes place on Sunday 30<sup>th</sup> September this year.

It is a 55 mile course and the event is non-competitive (although some of you ignore that point).

The ride starts and finishes at Chiswick and the funds raised are to go to the Stroke charity.

Further details will be included in the Summer Benchpress in June.

Last year's riders have already been sent an email from me but anyone else interested can contact me via the London office.

Bob Young—Technical Director  
London Region

# Thames Bridges Bike Ride - September 2018

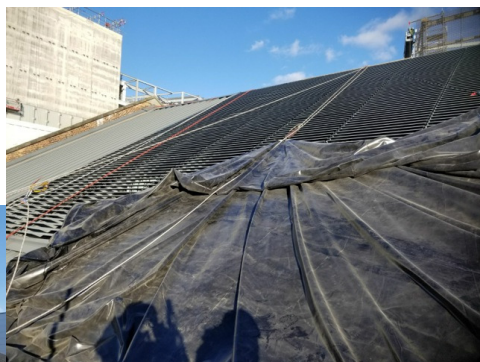


# “Dimco”

## Roof for Burberry Fashion Show



Benchmark was set an unusual task by Westfield Europe, on our project for them at White City Shopping Centre to make an old bus garage, which is now a listed building, watertight for a very high profile A-list event for Burberry where they planned to present an elaborate fashion show with spectacular lighting effects that would be streamed around the globe.



Joe Laffar, from our design team, and Westfield engineers looked at the feasibility of a filon sheeted roof but with the loads that had to also be accommodated from Burberry's lighting rigging and staging this proved too heavy for the existing structural steels. We then looked into shrink wrapping the louvres of the roof but this idea was dismissed as the existing louvres could potentially cut the sheeting and then Tom Cruise and co. would all get a soaking which would not have gone down very well. We had engaged with a new supplier; Gardners, and their

Liam Norman along with Kelly Rhodes of Industrial Abseiling Limited recommended a form of a banner material that we would need to purchase and which was made in France. We had it specially made and shipped over-night by special courier to Gardner's factory in Wales where the biggest banner printing company in the UK made a 60.0m long by 28.0m wide banner. The

total weight of the banner was nearly 1 tonne and our MD Rob West, along with Westfield's Project Director, Garry Blackshaw, took delivery at site at 6pm Saturday evening ready for the installation on Sunday as we had a short time frame to have this ready by the planned handover date of Monday.

On the Sunday night the weather changed with sub-zero temperatures making it unsafe to continue that evening but on the Wednesday we made it happen with help from a number of our lads working late and Industrial Abseiling calling all of their lads in from other jobs in London to get the job completed.

This had proved quite a challenge and special thanks for their efforts go to Liam and Kelly of our specialist supply chain partners along with J. Murphy, S.McDonnell, R.Arelis, P.Komaszaewski, J.Kaminski, M.Piekarski, C.Hulusi and our Site Manager Colin Crispino and weekend supervisor L.Adesanya of Benchmark Scaffolding's own team.

If you are interested to see the actual fashion show it can be viewed on YouTube if you search the following link:

[Burberry/Fall Winter 2018/2019 Full Fashion Show/Exclusive.](#)

**Stuart Didd—Project Manager - Westfield Europe / White City London Region**





# Benchmark's biggest ever single order for John Sisk at E03 Canada Court Wembley Park



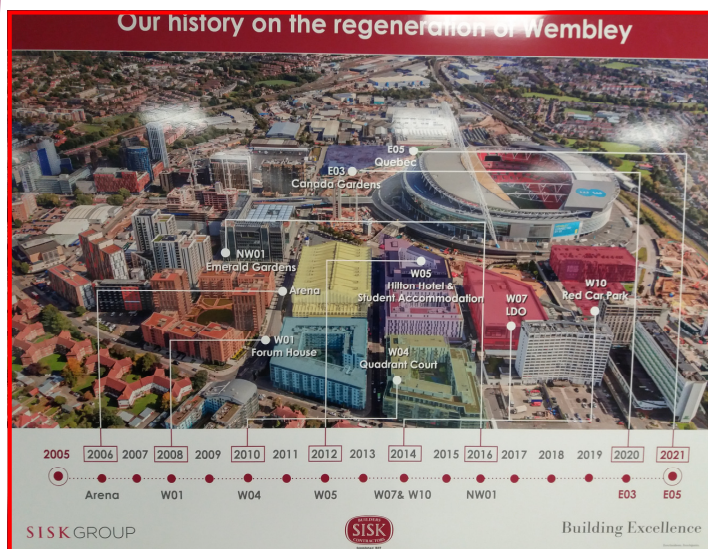
London's ongoing good relationship with the John Sisk team at Wembley has produced the biggest single order, of just over £4.9 million, that the company has ever received. The client is Quintain, as they have been on all the previous projects we have been involved in at the ongoing redevelopment of the area around the stadium, this being the fifth to date, with John Sisk being the Principal Contractor.

The order is for the supply, erect, adaption and dismantling of fully boarded access scaffolding to seven blocks ranging from 12 to 29 floors in height. There are 743 apartments being built in total. All the blocks are concrete frame structures with brick work

or cladding panel facades. There will be approximately, if we have used the right scale on our rulers, 33,000 square metres of scaffolding required in total, with at least five of the seven blocks being fully erected at the same time. There will be other associated scaffolds like 18no loading bays, 7no hoist run off towers with various other safety scaffolds and hand rails around site.

Tommy Venables will be leading our team on site once again and he is now making nearly as many appearances at Wembley as his beloved Tottenham Hotspurs. At its peak, between August 2018 and February 2019, we expect there to be upwards of 30+ scaffolders on site of various grades as well as a logistics team, headed by Vic Schnieder, of Slinger/Signallers, Traffic Marshalls and labourers. Alan Abraham has prepared the initial designs for the scaffold, and is being assisted by Connor Byrne.

We are due to commence our works in March this year and be complete around the middle of 2020.

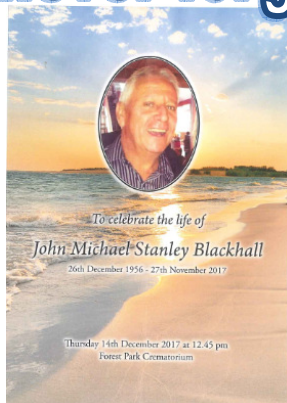


The site itself is right next to Wembley Stadium and includes parking for over 180 coaches on the ground floor level, within easy walking distance to the stadium.

**Eamonn Gollidge—Contracts Manager  
London Region**



# Sadly Missed but never forgotten

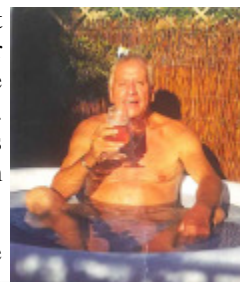


John Blackhall sadly passed away on 27<sup>th</sup> November last year and the large turnout at his funeral on 14<sup>th</sup> December was testimony to the high esteem in which he was held by those that had worked with him. Along with Mark Byrne, our London Operations Director, we were represented by several of his workmates from Benchmark and many more from elsewhere in the industry.

One of John's most significant jobs for us was to Project Manage a technically challenging £3 million job, for what was then Bovis, at Finsbury Circus where John was looking after over 30 scaffolders for much of the time. He also managed another large project called NEO Bankside, opposite the Tate Modern, before moving on to become a respected trainer at Leyton College where he was able to pass on his considerable knowledge and experience to young fledgling scaffolders.

John was very popular with his men whilst being always reliable and dependable for the Company and was always professional in all he did.

He will be sadly missed by all who knew him.



The family thank you for your kind thoughts and messages of sympathy and invite you to please join them at Hainault Forest Golf Club, Romford Road, Chigwell Row, Essex IG7 4QW.

If anyone would like to make a donation in John's memory please make a donation to St Francis Hospice.

The Co-operative Funeralcare  
215 Marford Way, Chigwell, Essex IG7 4DU  
Telephone: 020 8501 2343

## December Safety Award



The monthly safety award goes to Ron Clark, New Era site, Bowmer & Kirkland, Ron has been running this site for 18 months without any safety issues.

## January Safety Award



The monthly safety award goes to Leif Ernestine for fixing extendable transoms to the ladder access part of the edge protection on his lorry so that they can be slid shut when operatives are on the lorry. Also Leif has informed me that the ladder access securing bracket is too short for some of the lorries, I will have them altered.

## February Safety Award



The monthly safety award goes to Simon Dabbs at the Palace of Westminster for his general attitude to safety, by always checking the work area before starting, reporting issues and ensuring that the scaffolders in his control are working safely.



Well done Dale on 'Employee of the month' for ISG Construction at the Arts College in Leeds

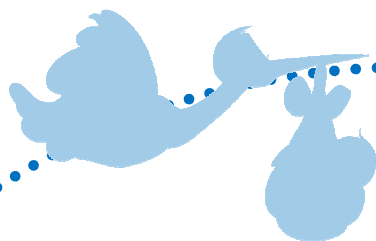


Staff at our London office await their prizes at the annual Christmas raffle in the Hanwell Boardroom.



If you've recently had a new addition to your family,  
or have a birthday coming up  
send us a photo to the Barnsley office  
and we'll make sure we show them in the next edition.  
Or you could email us:

**[barnsley@benchmarkscaffolding.com](mailto:barnsley@benchmarkscaffolding.com)**



The latest edition to the West family arrived at 9.21am on Sunday the 4<sup>th</sup> March  
weighing 10lb 6oz

Apparently he would have weighed more but he had a pee on the surgeon as he came out.

After a slight delay, due to Maria's indecision, he has been named Kobi Robert West and his training for  
Benchmark will commence soon. ☺



1 hour old



5 days old

#### Contact Numbers & Offices

##### West London Office

Waterside Trading Centre, Trumpers Way, Hanwell, London W7 2QD

Tel: 020 8867 9977 Fax: 020 8867 9900

Email: [info@benchmarkscaffolding.com](mailto:info@benchmarkscaffolding.com)

##### Northern Region Office

Max Darby House, Valley Road, Station Road Industrial Estate, Wombwell, Barnsley, S73 0BS

Tel: 01226 755 922 Fax: 01226 755 166

Email: [barnsley@benchmarkscaffolding.com](mailto:barnsley@benchmarkscaffolding.com)

# BENCHMARK SCAFFOLDING



*Setting the Standards*