

## ***SAFETY TOOLBOX MEETING***

### ***Covid-19 update TBT-107 (04.02.2022)***

Always refer to and follow the guidance from the ***COVID-19 (RW90) TBT, 28th December 2021***

From 11 January in England, people who receive positive lateral flow device (LFD) test results for coronavirus (COVID-19) will be required to self-isolate immediately and won't be required to take a confirmatory PCR test.

- People self-isolating with COVID-19 will have the option to reduce their isolation period after 5 full days if they test negative on both day 5 and day 6 and do not have a temperature, from Monday, 17 January
- Individuals who are still positive on their rapid lateral flow tests must stay in isolation until they have had 2 consecutive negative tests taken on separate days.

The COVID-19 rates are falling across the UK. however, most people with positive LFD results can be confident that they have COVID-19.

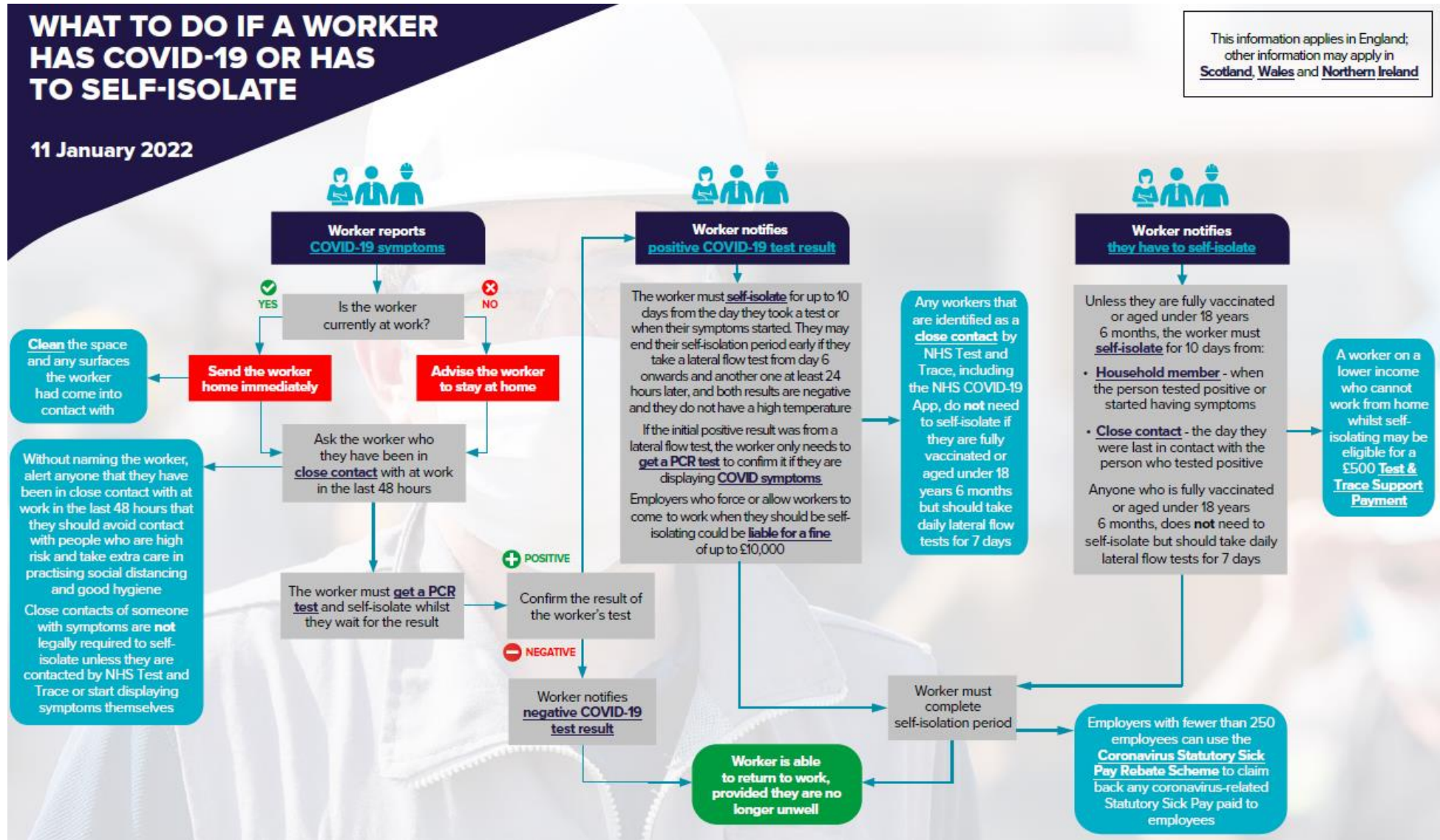
Anyone who develops 1 of the 3 main COVID-19 symptoms (continuous cough, loss of taste and/or smell and a high temperature 37.8 or above) should stay at home and self-isolate and take a PCR test. They must self-isolate if they get a positive test result, even if they have had a recent negative lateral flow test – these rules have not changed.

If you are fully vaccinated, and you live in the same household as someone with COVID-19, you are not legally required too self-isolate. However, you are strongly advised to take an LFD test every day for 7 days, and to self-isolate if any of these test results is positive.

Follow the Principal Contractors rules regarding Covid.

You are advised to wear a face covering while in shops and on public transport. Some shops and transport still maintain the wearing of face coverings.

Print this chart and hang in a suitable place



This chart is reviewed regularly and some of the details may have changed since the 11 January 2022